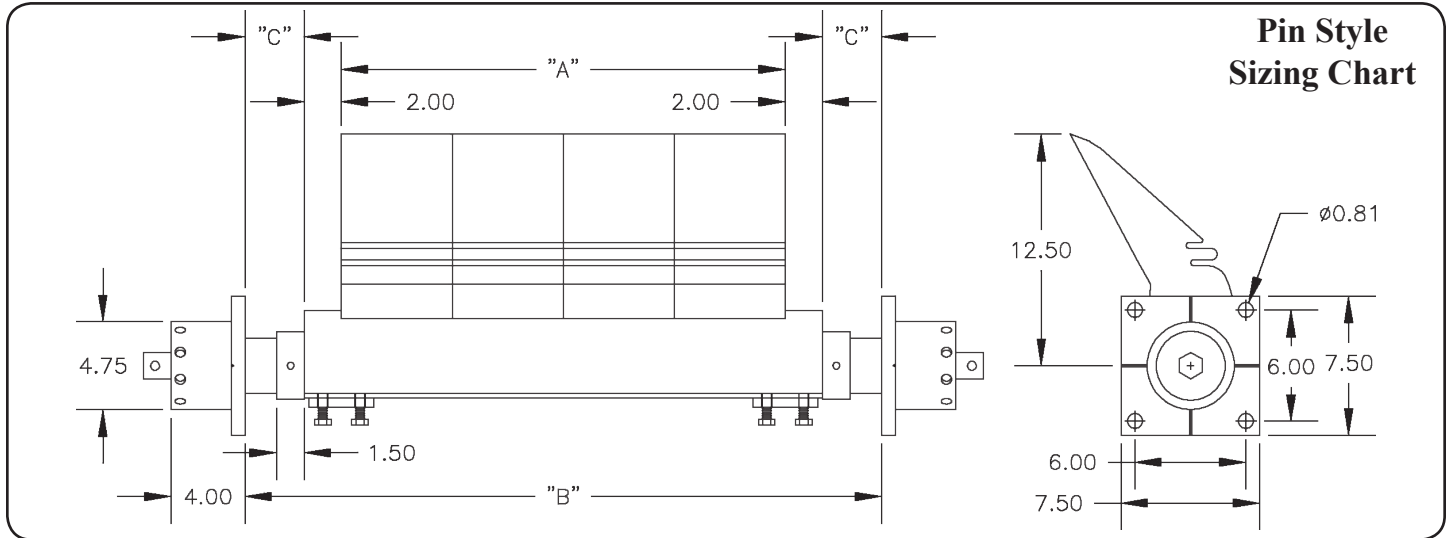


# SUPER HD ERASER™

## Sizing Chart Conveyor Belt Cleaning System



Part Number	A	Min. B	Max. B	Min. C	Max. C
CP-FST-4A28M-G83	24.00	28.50	57.00	0.25	14.50
CP-FST-5A34D-G83	30.00	44.50	63.00	5.25	"
CP-FST-6A40D-G83	36.00	44.50	69.00	3.25	"
CP-FST-7A46D-G83	42.00	46.50	75.00	0.25	"
CP-FST-8A52D-G83	48.00	52.50	81.00	"	"
CP-FST-9A58D-G83	54.00	58.50	87.00	"	"
CP-FST-10A64D-G83	60.00	64.50	93.00	"	"
CP-FST-11A70D-G83	66.00	70.50	99.00	"	"
CP-FST-12A76D-G83	72.00	76.50	105.00	"	"
CP-FST-13A82D-G83	78.00	82.50	111.00	"	"
CP-FST-14A88D-G83	84.00	88.50	117.00	"	"
CP-FST-15A94D-G83	90.00	94.50	123.00	"	"
CP-FST-16A100D-G83	96.00	100.50	129.00	"	"
CP-FST-17A106D-G83	102.00	106.50	135.00	"	"
CP-FST-18A112D-G83	108.00	112.50	141.00	"	"
CP-FST-19A118D-G83	114.00	118.50	147.00	"	"

**Note:**  
 • To get minimum B or C, Shaft Collars must be removed.