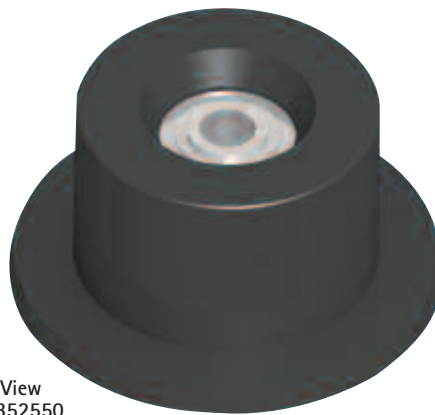
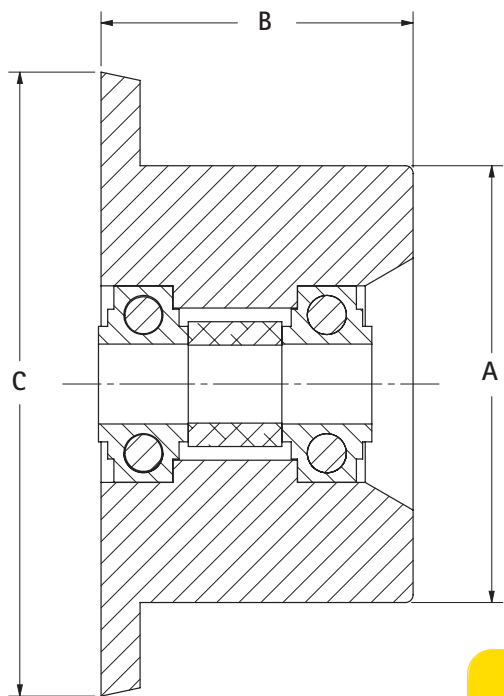


## RM SERIES ROLLERS

Our economical RM series rollers are designed specifically for your light- to medium-duty applications. These rollers are constructed of solid Kryptane polyurethane and have two 203KRR2 bearings. The RM series offers excellent mud shedding and abrasion-resistant properties that are unmatched in the industry.



Section View  
AG-RM352550

### SOLID POLYURETHANE WITH URETHANE FLANGES

1/2" SHAFT	PART NUMBER	DIAMETER	WIDTH	FLANGE DIA.	AXLE DIA.	REPAIR KIT
	AG-RM241500-50	2-3/8"	1-1/2"	N/A	1/2"	RK-RM1500-50
	AG-RM351550-50	3-1/2"	1-1/2"	5"	1/2"	RK-RM1500-50
	AG-RM352500-50	3-1/2"	2-1/2"	N/A	1/2"	RK-RM2500-50
	AG-RM352550-50	3-1/2"	2-1/2"	5"	1/2"	RK-RM2500-50
	AG-RM352560-50	3-1/2"	2-1/2"	6"	1/2"	RK-RM2500-50
	AG-RM402500-50	4"	2-1/2"	N/A	1/2"	RK-RM2500-50
	AG-RM402550-50	4"	2-1/2"	5"	1/2"	RK-RM2500-50
	AG-RM402560-50	4"	2-1/2"	6"	1/2"	RK-RM2500-50

5/8" SHAFT	PART NUMBER	DIAMETER	WIDTH	FLANGE DIA.	AXLE DIA.	REPAIR KIT
	AG-RM241500	2-3/8"	1-1/2"	N/A	5/8"	RK-RM1500
	AG-RM351550	3-1/2"	1-1/2"	5"	5/8"	RK-RM1500
	AG-RM352500	3-1/2"	2-1/2"	N/A	5/8"	RK-RM2500
	AG-RM352550	3-1/2"	2-1/2"	5"	5/8"	RK-RM2500
	AG-RM352560	3-1/2"	2-1/2"	6"	5/8"	RK-RM2500
	AG-RM402500	4"	2-1/2"	N/A	5/8"	RK-RM2500
	AG-RM402550	4"	2-1/2"	5"	5/8"	RK-RM2500
	AG-RM402560	4"	2-1/2"	6"	5/8"	RK-RM2500

## RUBBER ROLLERS

## WITH STEEL FLANGES

A B C

1/2" SHAFT

PART NUMBER	DIAMETER	WIDTH	FLANGE DIA.	AXLE DIA.	REPAIR KIT
AG-RC351550-50	3-1/2"	1-1/2"	5"	1/2"	RK-1500-50
AG-RC352500-50	3-1/2"	2-1/2"	N/A	1/2"	RK-2500-50
AG-RC352550-50	3-1/2"	2-1/2"	5"	1/2"	RK-2500-50
AG-RC352560-50	3-1/2"	2-1/2"	6"	1/2"	RK-2500-50
AG-RC352580-50	3-1/2"	2-1/2"	8"	1/2"	RK-2500-50
AG-RC401550-50	4"	1-1/2"	5"	1/2"	RK-1500-50
AG-RC402500-50	4"	2-1/2"	N/A	1/2"	RK-2500-50
AG-RC402550-50	4"	2-1/2"	5"	1/2"	RK-2500-50
AG-RC402560-50	4"	2-1/2"	6"	1/2"	RK-2500-50
AG-RC402580-50	4"	2-1/2"	8"	1/2"	RK-2500-50

5/8" SHAFT

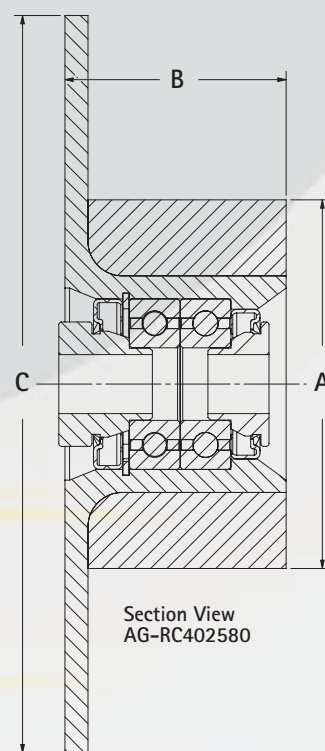
PART NUMBER	DIAMETER	WIDTH	FLANGE DIA.	AXLE DIA.	REPAIR KIT
AG-RC351550	3-1/2"	1-1/2"	5"	5/8"	RK-1500
AG-RC352500	3-1/2"	2-1/2"	N/A	5/8"	RK-2500
AG-RC352550	3-1/2"	2-1/2"	5"	5/8"	RK-2500
AG-RC352560	3-1/2"	2-1/2"	6"	5/8"	RK-2500
AG-RC352580	3-1/2"	2-1/2"	8"	5/8"	RK-2500
AG-RC401550	4"	1-1/2"	5"	5/8"	RK-1500
AG-RC402500	4"	2-1/2"	N/A	5/8"	RK-2500
AG-RC402550	4"	2-1/2"	5"	5/8"	RK-2500
AG-RC402560	4"	2-1/2"	6"	5/8"	RK-2500
AG-RC402580	4"	2-1/2"	8"	5/8"	RK-2500

3/4" SHAFT

PART NUMBER	DIAMETER	WIDTH	FLANGE DIA.	AXLE DIA.	REPAIR KIT
AG-RC351550-75	3-1/2"	1-1/2"	5"	3/4"	RK-1500-75
AG-RC352500-75	3-1/2"	2-1/2"	N/A	3/4"	RK-2500-75
AG-RC352550-75	3-1/2"	2-1/2"	5"	3/4"	RK-2500-75
AG-RC352560-75	3-1/2"	2-1/2"	6"	3/4"	RK-2500-75
AG-RC352580-75	3-1/2"	2-1/2"	8"	3/4"	RK-2500-75
AG-RC401550-75	4"	1-1/2"	5"	3/4"	RK-1500-75
AG-RC402500-75	4"	2-1/2"	N/A	3/4"	RK-2500-75
AG-RC402550-75	4"	2-1/2"	5"	3/4"	RK-2500-75
AG-RC402560-75	4"	2-1/2"	6"	3/4"	RK-2500-75
AG-RC402580-75	4"	2-1/2"	8"	3/4"	RK-2500-75

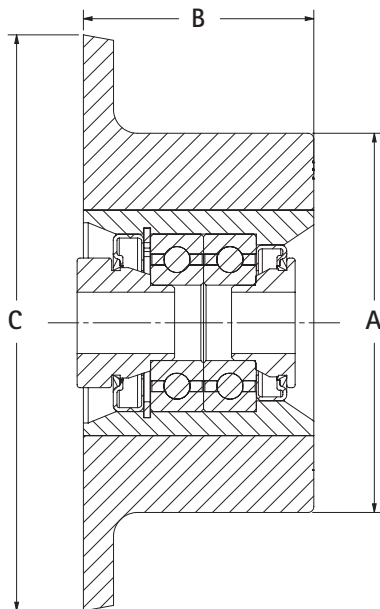
Our RC series rubber rollers are constructed with high-quality rubber vulcanized on a steel bearing housing with steel flanges.

What separates these rollers from the competition is our patented bearing protection system with 6204-2RS double-lip sealed bearings that are manufactured to our exacting specifications.



## R SERIES HD ROLLERS

Our HD series heavy duty rollers offer high-quality, abrasion-resistant Kryptane polyurethane cast on a precision machined hub. The HD rollers have urethane flanges and a slightly tapered face which reduces mud build up and makes them the perfect choice for your most abrasive and demanding areas on your equipment. All these features coupled with our patented bearing protection system provide you with one of the hardest working rollers available.



Section View  
AG-R402500



### HEAVY DUTY URETHANE ROLLERS

1/2" SHAFT

PART NUMBER	DIAMETER	WIDTH	FLANGE DIA.	AXLE DIA.	REPAIR KIT
AG-R282500-50	2-3/4"	2-1/2"	N/A	1/2"	RK-2500-50
AG-R282540-50	2-3/4"	2-1/2"	4"	1/2"	RK-2500-50
AG-R351550-50	3-1/2"	1-1/2"	5"	1/2"	RK-1500-50
AG-R352500-50	3-1/2"	2-1/2"	N/A	1/2"	RK-2500-50
AG-R352550-50	3-1/2"	2-1/2"	5"	1/2"	RK-2500-50
AG-R352560-50	3-1/2"	2-1/2"	6"	1/2"	RK-2500-50
AG-R402500-50	4"	2-1/2"	N/A	1/2"	RK-2500-50
AG-R402550-50	4"	2-1/2"	5"	1/2"	RK-2500-50
AG-R402560-50	4"	2-1/2"	6"	1/2"	RK-2500-50
AG-R502500-50	5"	2-1/2"	N/A	1/2"	RK-2500-50
AG-R502580-50	5"	2-1/2"	8"	1/2"	RK-2500-50

5/8" SHAFT

PART NUMBER	DIAMETER	WIDTH	FLANGE DIA.	AXLE DIA.	REPAIR KIT
AG-R282500	2-3/4"	2-1/2"	N/A	5/8"	RK-2500
AG-R282540	2-3/4"	2-1/2"	4"	5/8"	RK-2500
AG-R351550	3-1/2"	1-1/2"	5"	5/8"	RK-1500
AG-R352500	3-1/2"	2-1/2"	N/A	5/8"	RK-2500
AG-R352550	3-1/2"	2-1/2"	5"	5/8"	RK-2500
AG-R352560	3-1/2"	2-1/2"	6"	5/8"	RK-2500
AG-R402500	4"	2-1/2"	N/A	5/8"	RK-2500
AG-R402550	4"	2-1/2"	5"	5/8"	RK-2500
AG-R402560	4"	2-1/2"	6"	5/8"	RK-2500
AG-R502500	5"	2-1/2"	N/A	5/8"	RK-2500
AG-R502580	5"	2-1/2"	8"	5/8"	RK-2500

3/4" SHAFT

PART NUMBER	DIAMETER	WIDTH	FLANGE DIA.	AXLE DIA.	REPAIR KIT
AG-R282500-75	2-3/4"	2-1/2"	N/A	3/4"	RK-2500-75
AG-R282540-75	2-3/4"	2-1/2"	4"	3/4"	RK-2500-75
AG-R351550-75	3-1/2"	1-1/2"	5"	3/4"	RK-1500-75
AG-R352500-75	3-1/2"	2-1/2"	N/A	3/4"	RK-2500-75
AG-R352550-75	3-1/2"	2-1/2"	5"	3/4"	RK-2500-75
AG-R352560-75	3-1/2"	2-1/2"	6"	3/4"	RK-2500-75
AG-R402500-75	4"	2-1/2"	N/A	3/4"	RK-2500-75
AG-R402550-75	4"	2-1/2"	5"	3/4"	RK-2500-75
AG-R402560-75	4"	2-1/2"	6"	3/4"	RK-2500-75
AG-R502500-75	5"	2-1/2"	N/A	3/4"	RK-2500-75
AG-R502580-75	5"	2-1/2"	8"	3/4"	RK-2500-75