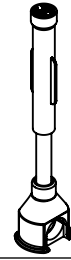


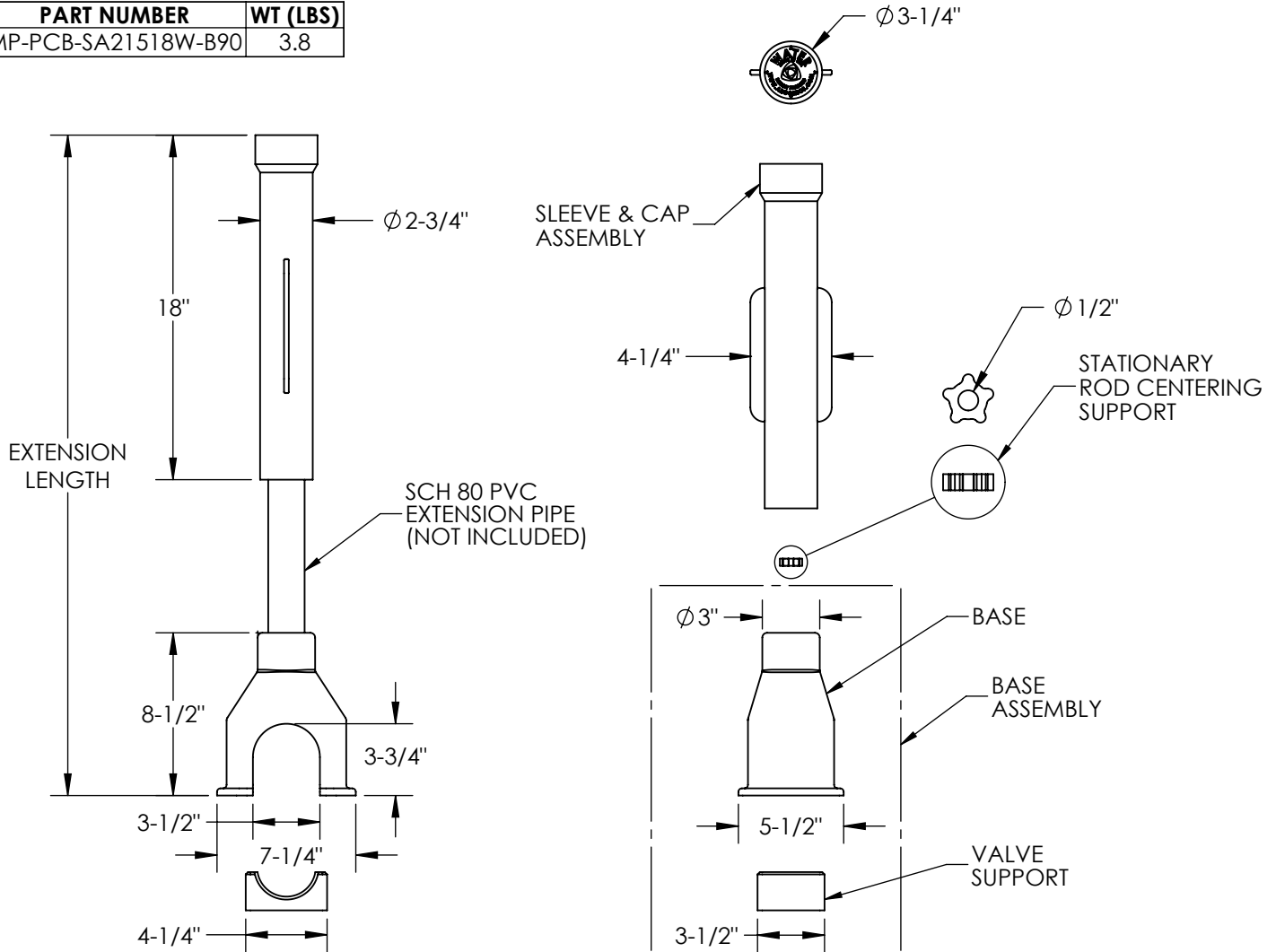
# SUBMITTAL DATA SHEET

## POLY CURB BOXES

ARCH PATTERN,  $\text{Ø}1\text{-}\frac{1}{2}$ " EXT PIPE,  $1\text{-}\frac{1}{2}$ " & 2" CURB STOPS



PART NUMBER	WT (LBS)
MP-PCB-SA21518W-B90	3.8



### INFORMATION

- ARCH BASE IS DESIGNED TO BE USED WITH  $1\text{-}\frac{1}{2}$ " & 2" CURB STOPS
- BASE, VALVE SUPPORT, SLEEVE, CAP, AND ROD SUPPORT MADE OF POLYURETHANE
- EXTENSION LENGTH IS FIELD ADJUSTABLE USING  $1\text{-}\frac{1}{2}$ " SCHEDULE 80 PVC PIPE (NOT INCLUDED)
- CAP CONTAINS MAGNET FOR LOCATING
- VALVE SUPPORT IS A UNIVERSAL FIT FOR MOST  $1\text{-}\frac{1}{2}$ " BALL STYLE CURB STOPS AND IS NOT USED WITH 2" CURB STOPS
- STATIONARY ROD CENTERING SUPPORT DESIGNED FOR  $\frac{1}{2}$ " DIAMETER ROD

Argonics Inc. considers the information on this submittal sheet to be correct when published. Item and option availability, including specifications, are subject to change without notice.



**ARGONICS INC.**  
 520 9th St. Gwinn, MI 49841  
 906.226.9747  
 Fax: 906.226.9779  
 www.argonics.com

Submitted By: