

CLASSIFIER SHOES APPLICATION GUIDE

Application Data Sheet

Customer Information

Company: _____

Contact: _____

Address: _____

City: _____

State: _____

ZIP: _____

Phone: _____

Email: _____

Note: Not all styles are available in all sizes. If Argonics does not currently manufacture the shoe required, a mold can be made based on information on this data sheet.

Manufacturer

Akins

Blackstone

Cindaco

Denver

Eagle

EESCO

Greystone

Kolberg

McLanahan

Nermco

Telsmith

Wemco

Sullivan Strong Scott

Other: _____

Screw Information

Screw diameter: _____

OEM part #: _____

Auger pitch: _____

Shaft diameter: _____

Single screw

Double screw

Number of shoes required: _____

Shoe position:

Outer

Middle

Inner

Material specs if not sand: _____

To quote a price or manufacture a shoe for your specific requirements, please provide dimensional information as requested for the shoe requirements. Also please indicate the profile and the hole detail required. Note that the step profile is for outer shoes only. A tape measure and a straight edge are necessary to measure shoes and complete data sheet. For accurate quotation or manufacturer of a classifier shoe, please complete the data table on the other side of this sheet. All measurements should be accurate to +/- 1/16" to ensure a proper fitting shoe. Use a separate data sheet for each shoe required.

CLASSIFIER SHOES APPLICATION GUIDE

Application Data Sheet

Note:

- This information is designed to allow Argonics to quote the part. It is not enough information to build the part if a mold does not already exist.
- There are many classifier shoe designs available. If your shoe does not fit the designs shown below, please sketch on a separate piece of paper.

Shoe Mounting Location Layout

AA

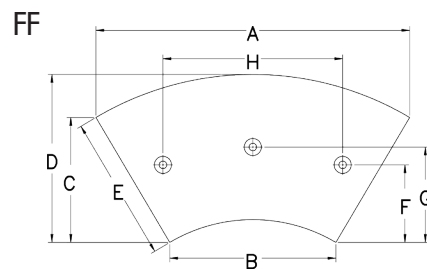
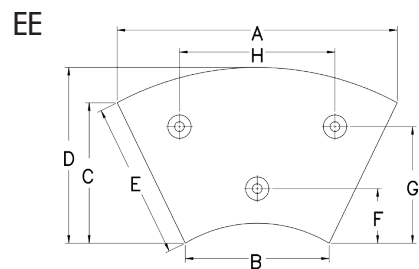
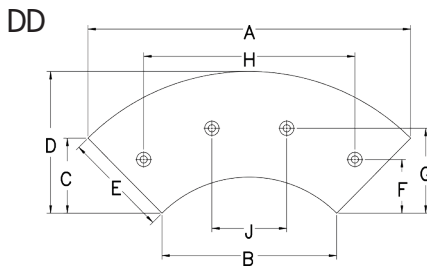
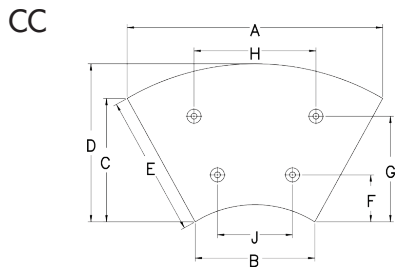
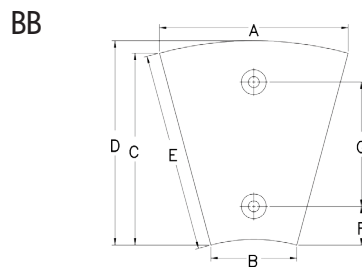
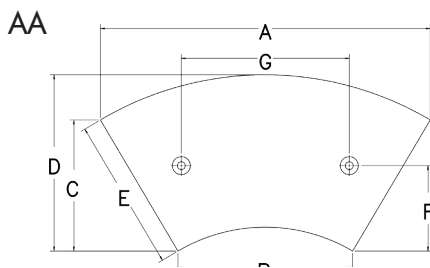
BB

CC

DD

EE

FF



Dimensions

A: _____

B: _____

C: _____

D: _____

E: _____

F: _____

G: _____

H: _____

I: _____

Shoe Profile Measurements
(see below)

T1: _____

T2: _____

T3: _____

Shoe Profile Style

1

2

3

4

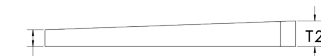
1



2



3



4

