

CUTTING EDGES

SNOW PLOW POLYURETHANE BLADES

The polyurethane blade will absorb the shock produced by impact and will not crack the cast iron and concrete structures. Protect your manhole covers, valve boxes, curbs, markings, reflectors and cobblestones.



Slotted or hole
attachment available

Reversible block offers
two wear surfaces

BENEFITS

- ✱ Designed to withstand the harshest winters
- ✱ Polyurethane outlasts rubber 3-5 times, reducing truck downtime
- ✱ Reversible blade doubles the wear life
- ✱ Noise reduction for both residential areas and the driver
- ✱ Absorbs shock, creating less wear and tear on vehicle and less driver fatigue

USE ON:

- ✱ Truck blades
- ✱ Box plows
- ✱ Dozer blades
- ✱ ATV blades
- ✱ Tractor blades

Maximum speed of 35/mph



All Argonics products are
proudly made in the USA.



TUNDRA TAMER

 **ARGONICS**
ENGINEERED POLYURETHANE

520 9th Street, Gwinn, MI 49841
fax: 906.226.9779 * information@argonics.com

WWW.ARGONICS.COM
906.226.9747 * 800.991.2746

ORDER FORM

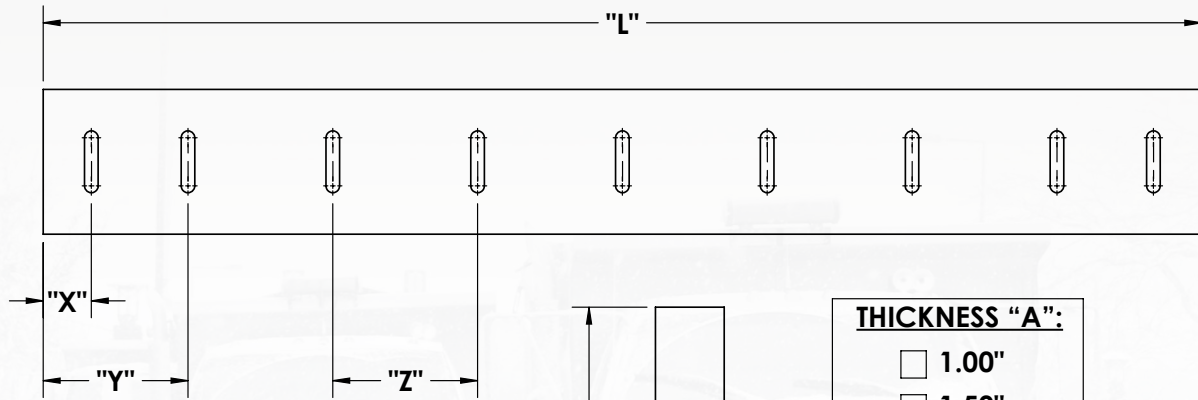
Plow Make: _____

Plow Model: _____

Cutting Edge OEM Part Number: _____

ATTACHMENT METHOD:

☐ SLOTS ☐ HOLES ☐ BLANK



LENGTH "L": _____

Note: Maximum standard length is 12 ft.
For longer blades, consult factory.

"X": _____

"Y": _____

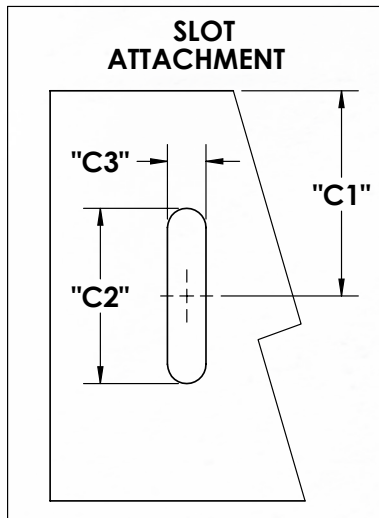
"Z": _____

THICKNESS "A":

☐ 1.00"
☐ 1.50"
☐ 2.00"

BLADE WIDTH "B":

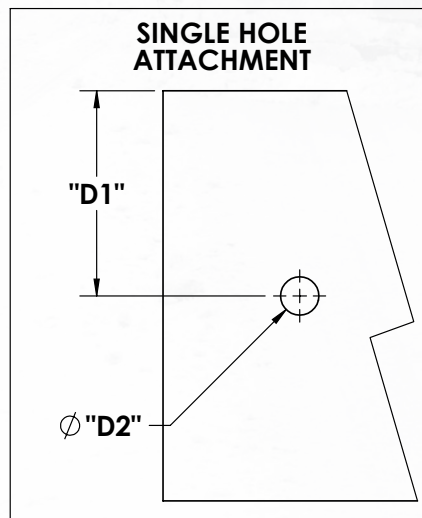
☐ 6.00"
☐ 8.00"
☐ 10.00"
☐ 12.00"



"C1": _____

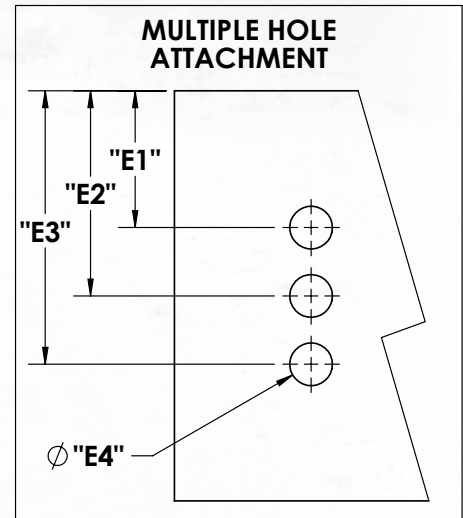
"C2": _____

"C3": _____



"D1": _____

"D2": _____



"E1": _____

"E2": _____

"E3": _____

"E4": _____