

INSTALLATION GUIDE

SPEEDY SLEEVE™

Curb Valve Box Repair Sleeve - STANDARD, SNAP-IN CAP



520 9th Street • Gwinn, MI 49841 • Phone: 800.991.2746 Fax: 906.226.9779

www.argonics.com

SPEEDY SLEEVE™ Curb Valve Box Repair Sleeve - Snap-in Cap

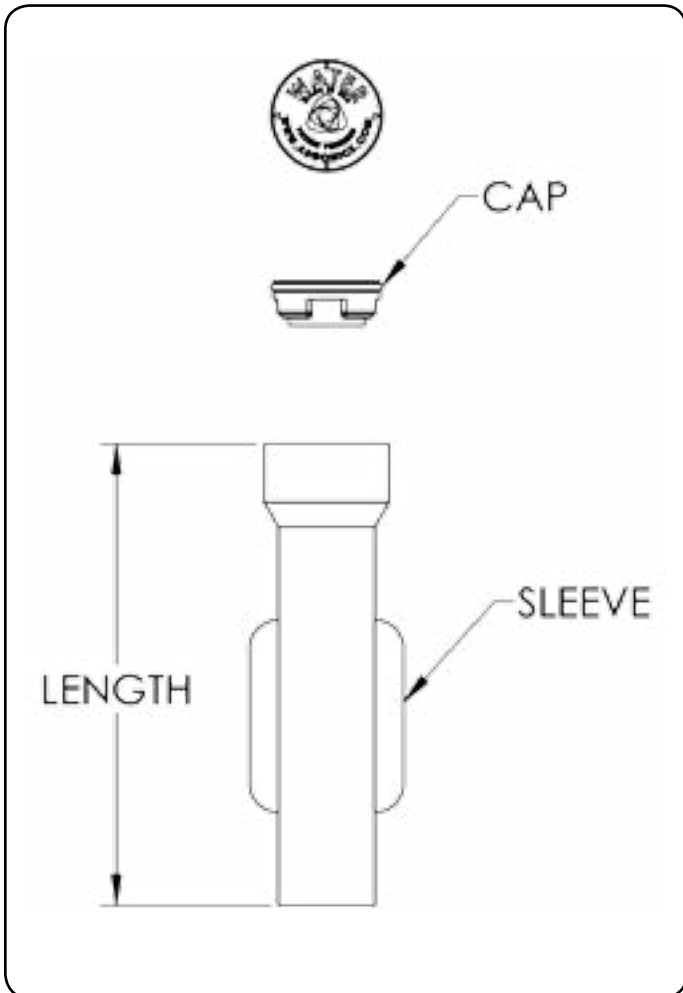
⚠️ WARNING

Always obey all applicable safety rules.

Installation Tools Required

- Locator
- Shovel
- Tape measure
- Hammer or small sledge
- Straight edge
- Wood block (small piece of 2" x 4")
- Curb box key
- Saw or pipe cutter
- Hand compactor

ASSEMBLY BREAKDOWN



Step One: Choose the Correct Speedy Sleeve

Determine the diameter of the pipe and the depth of the damage. Use Table 1 to select your Speedy Sleeve.

Pipe Dia.	Length	Part Number	Weight (lbs)
1"	6"	MP-RS-S1006W-B90	0.86
1"	12"	MP-RS-S1012W-B90	1.39
1"	18"	MP-RS-S1018W-B90	1.92
1¼"	6"	MP-RS-S1206W-B90	0.92
1¼"	12"	MP-RS-S1212W-B90	1.54
1¼"	18"	MP-RS-S1218W-B90	2.16
1½"	6"	MP-RS-S1506W-B90	0.96
1½"	12"	MP-RS-S1512W-B90	1.65
1½"	18"	MP-RS-S1518W-B90	2.34

Note: if installing a Speedy Sleeve with a twist-on cap, please see our other install guides for those applications.

INSTALLATION

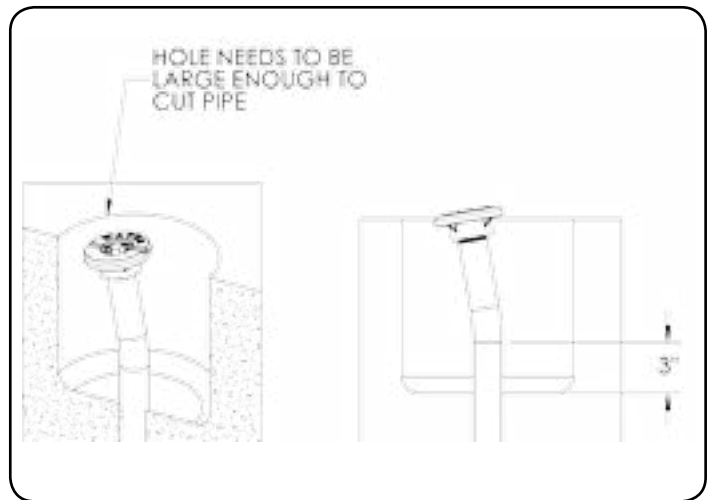
Step Two: Assess Curb Box Failure (Detail damage that can be repaired)

If the damage to the curb box pipe is less than 15" below the grade, then the following steps can be used to install the Argonics Speedy Sleeve.

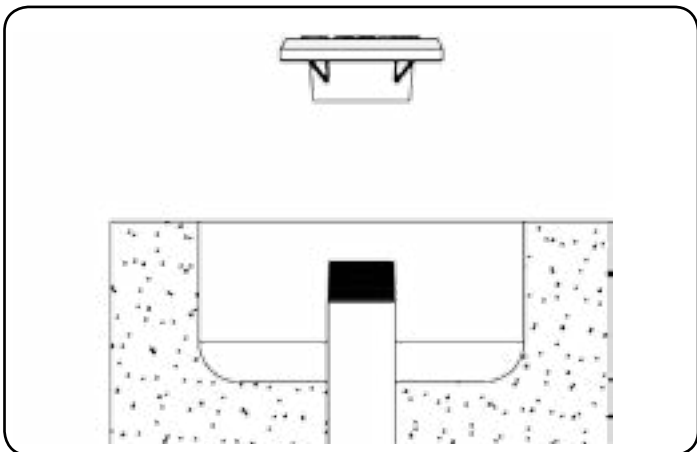
Note: If the damage to the curb box pipe is greater than 15" below the grade, the damaged section will need to be removed. Then a new section of pipe will need to be spliced to the old pipe to raise the height to less than 15" below grade in order to install the Argonics Speedy Sleeve.

Step Three: Access Pipe

Dig around the curb box to gain access to the pipe. The hole should be of sufficient size to provide enough room to cut the pipe if necessary. The hole should be at least 3" below the point of damage.



Step Four: Remove Cap



If possible, remove the cast iron lid by unthreading or cutting the pipe. If cutting the pipe, please continue to step 5.

Step Five: Verify Pipe Height

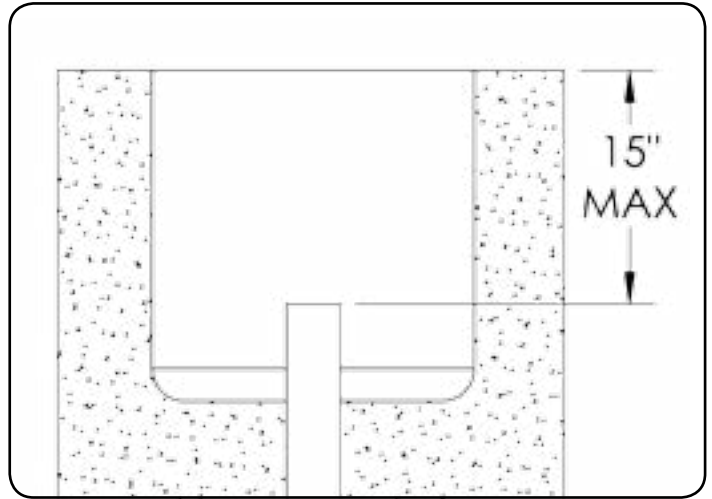


Using a tape measure, verify the distance from the grade to the top of the pipe. The minimum dimension is 1" below the grade, which allows for a flush installation; the maximum is 15".

INSTALLATION

Step Six: Cut Pipe

Cut the pipe just below the damaged area. Be sure that it is less than 15" below grade.

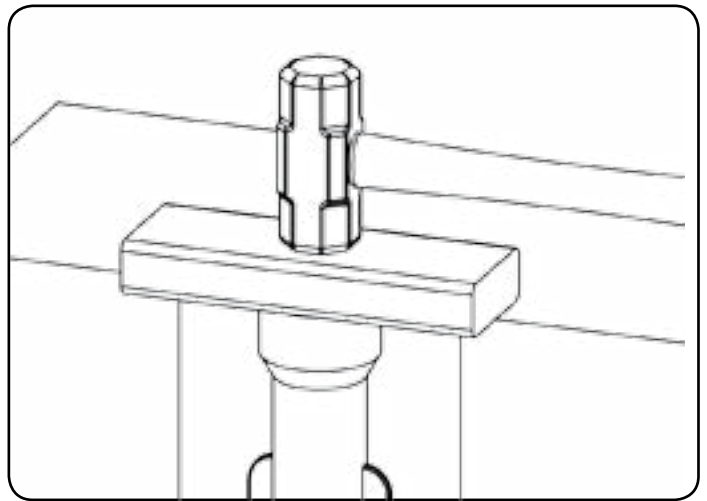


Step Seven: Place Speedy Sleeve Over Pipe



Line up Speedy Sleeve with the top of pipe and slip it over the pipe. Then push the sleeve down over the pipe by hand as far as it will go.

Step Eight: Tap Down Sleeve



Place the wood block on top of the Speedy Sleeve and tap the sleeve with the hammer to drive down it down to the desired depth. Use caution when pounding on the Speedy Sleeve as the hammer may rebound.

Note: Depending of the type of soil and the soil compaction, it may not be possible to pound the sleeve flush with the grade. In those cases the hole around the pipe will need to be dug deeper to allow the sleeve to be installed.

INSTALLATION

Step Nine: Fill and Compact

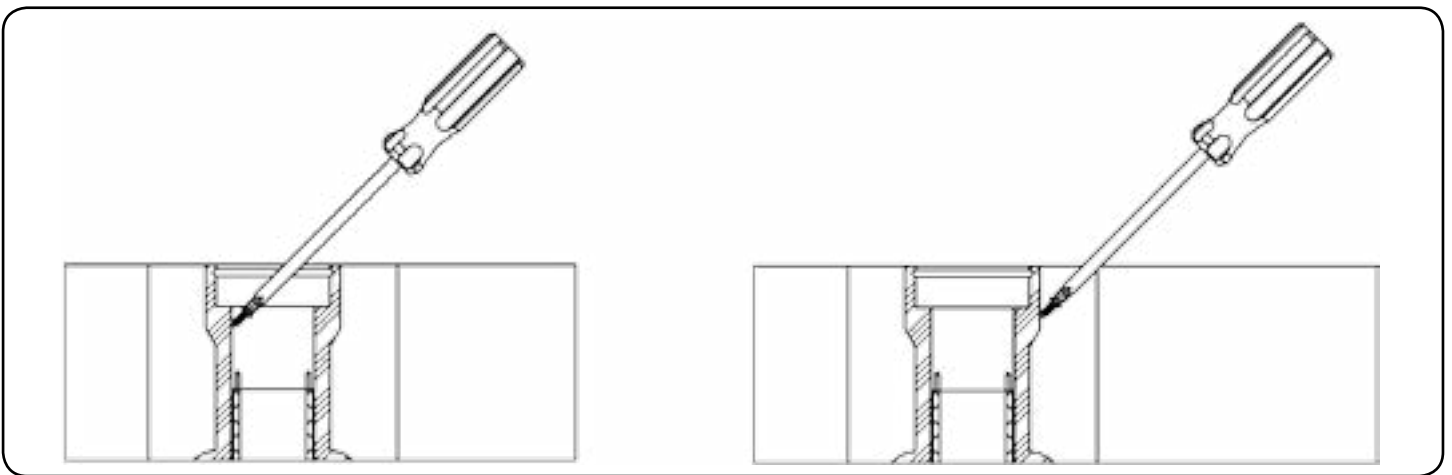


Fill in the hole around the curb box and compact the area flush with existing grade.

YOUR SPEEDY SLEEVE INSTALLATION IS NOW COMPLETE.

Optional: Attaching Tracing Wire

Tracer wire can be attached with sheet metal screw on inside or outside of Speedy Sleeve at the top part of the base as shown. Make sure the screw does not interfere with the cap.



To access the valve after the Speedy Sleeve has been installed, see the instructions on page 6.

INSTALLATION

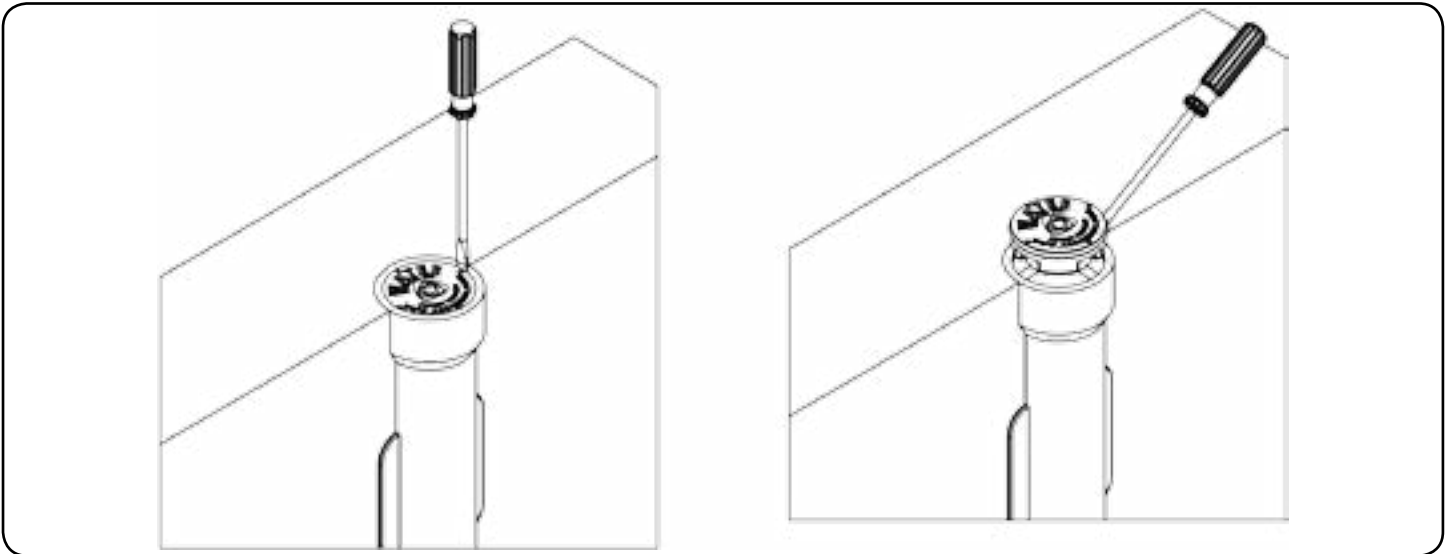
ACCESSING THE VALVE WHEN AN ARGONICS SPEEDY SLEEVE HAS BEEN INSTALLED

Step 1

Work a flat-head screwdriver down between the cap and the sleeve at one of the pry points indicated on the cap and pry the cap out.

Step 2

To re-install the cap, first remove any dirt or debris from the pocket area on the sleeve. Push the cap on the sleeve and push it down by hand to snap the cap in place.



NOTES

Argonics, Inc. • 520 9th St. • Gwinn, MI 49841 USA
Phone: 906.226.9747 800.991.2746 Fax: 906.226.9779
publicworks.argonics.com