

Aggregate Processing Parts



Argonics is one of the country's largest producers of wear-resistant polyurethane products, providing high-performance urethane solutions at its state-of-the-art production facility. Whether you're producing concrete, manufacturing aggregate products, processing grain or mining precious metal, Argonics has built its reputation on providing cost-effective solutions for some of the most demanding applications.



AGGREGATE PRODUCTS:

- Screen deck shaft tube covers
- Crown bar channel covers
- Spray shields
- Spray deflectors
- Screen deck tension rails
- Redi-Liners
- Wear plates
- Classifier shoes



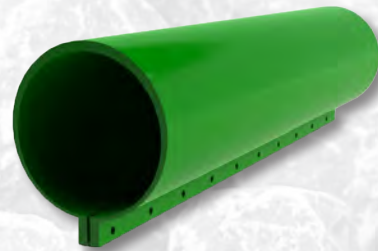
Screen Deck Parts

Screen decks provide many possibilities for wear, due to the abrasive materials being screened. Our polyurethane screen deck parts meet the demands of even the most abrasive material, whether it be sliding or impact abrasion, sticking, or corrosion.



Screen Deck Shaft Tube Cover

Our shaft tube cover wraps around the tube and bolts on for easy installation. It's preformed to fit the tube snugly and is thicker at the top to give you more wear material where it is needed. Available in lengths of 24" and 30", with nominal sizes of 6", 8", 12", and 17".



Crown Bar Channel Cover

This product lasts five times longer than a rubber channel cover. Available for 3/8" and 1/2" channel. Available in any length up to 25 feet.

Benefits include:

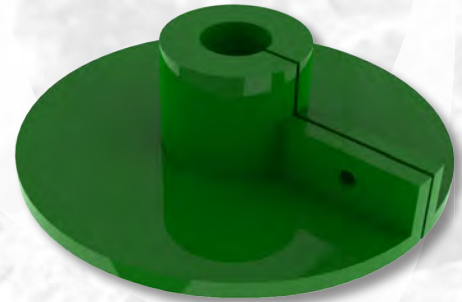
- Slightly tapered legs to prevent rolling off the bar under harsh conditions
- Reduces noise and vibration
- Extends the life of your screen
- Outstanding abrasion resistance



Spray Shield

Designed to keep water on your deck where it belongs.

Simple, inexpensive, with an effective design, this product has a longer wear life than rubber boots. Available for 1 1/2", 2", and 3" pipe.



Spray Deflector

The longest lasting spray deflectors available, with easy installation and increased wash effectiveness. Available for 1 1/2" and 2" pipe.

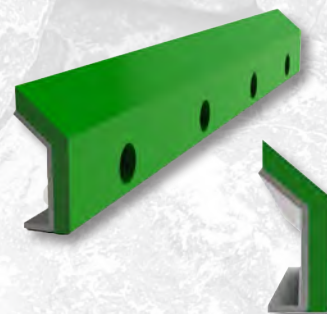


Screen Deck Tension Rail

Our screen deck tension rails are engineered for exceptional durability, featuring 1/4" steel rail construction paired with a 3/4" layer of abrasion-resistant polyurethane. They come in 48" and 60" lengths and are also offered in an all-steel option to meet your application needs.

Tension rails fit the following manufacturers:

- Cedarapids
- JCI
- TelSmith
- Pioneer
- Simplicity
- Allis-Chalmers
- El-Jay
- Lippman
- Hewitt-Robbins



Redi-Liner™ MODULAR LINING SYSTEM



Our Redi-Liner 12"x12" panels can be arranged into any wear pattern you need. Its unique, simple installation method allows you to replace only what's needed, instead of replacing the entire liner.

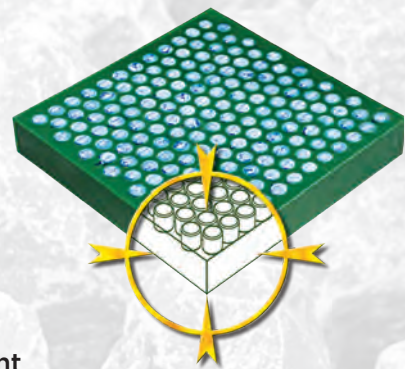
PERFECT FOR:

- Screen discharge liners
- Screen feed liners
- Conveyor transfer points
- Chutes with high wear
- Charge chutes

AVAILABILITY:

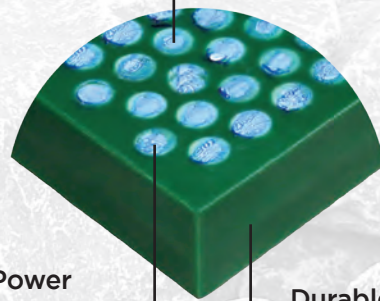
Choose from solid or ceramic-embedded polyurethane

- Ceramic-embedded available in 2" and 2½"
- Solid available in 1", 1½", 2", and 2½"



Impact Resistant

High alumina oxide ceramics



Holding Power

Mechanically and chemically bonded

Durable

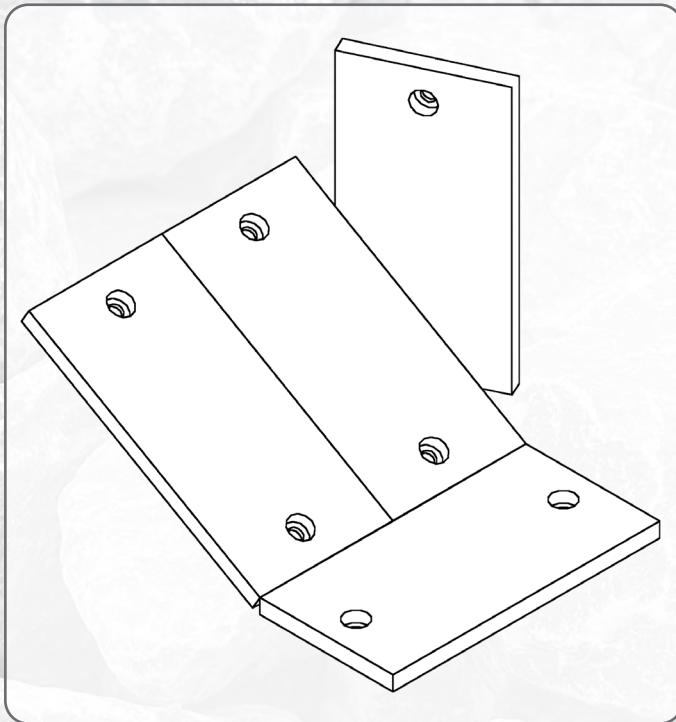
Strong, wear-resistant polyurethane

Redi-Liner is easy to install, requires no maintenance, will outlast most any other wear product available, and provides protection for your toughest wear areas.

Wear Plates MODULAR LINING SYSTEM



Wear plates help eliminate material adhesion and dampen noise levels significantly. Our polyurethane wear plates have proven to be cost-effective over steel liners by as much as 5-to-1.



BENEFITS:

- High level of abrasion resistance
- Nonstick characteristics
- High-performance urethane extends plate life

Our wear plates are available in a variety of standard sizes, as well as weldable and boltable options. We can quickly produce custom sizes to suit your requirements.

Classifier Flight Shoes



We've replaced alloy shoes in sand and gravel plants around the world. Installation after installation, our classifier shoes outlast metal alloys and our competitors' best urethane shoes. We have classifier flight shoes available for most classification screws in the market with quick lead times. There is also a quick turnaround time on custom shoes.

REPLACEMENTS TO RETROFIT:

- Akins
- Blackstone
- Cindaco
- Denver
- Eagle
- Essco
- Greystone
- Kolberg
- Kolman
- Metz
- McLanahan
- Nermco
- Telsmith
- Torgenson
- Wemco

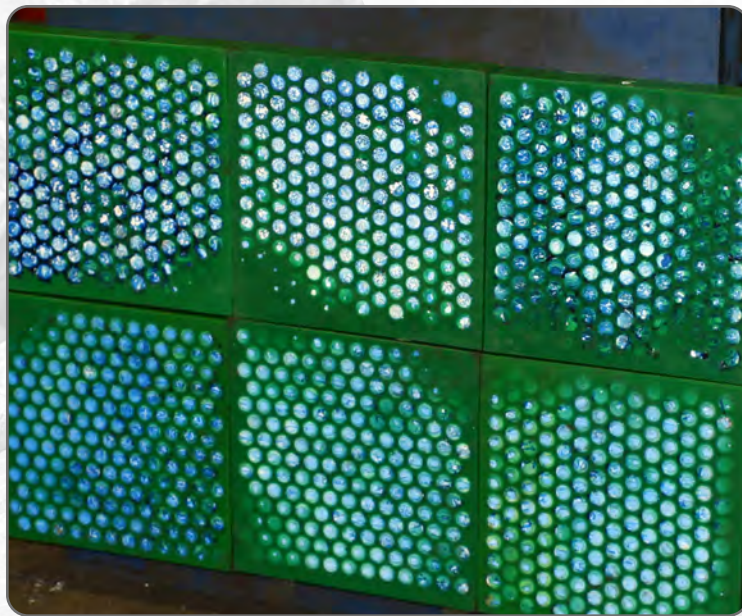


PRODUCT: Redi-Liner ceramic wear panels

Leslie Vale Quarry, located in Australia, annually produces **more than 700,000 tons of high-quality, hard rock dolerite products**. The volume of their crushing operations created enormous wear issues with their existing steel wear liner, which was lasting, on average, only five months.

Frustrated, they turned to Argonics products after a recommendation.

“The Redi-Liner Ceramic Lining System has lasted for over 3 years. It is so much better than the panels I used previously, and has far exceeded my expectations,” said the quarry manager. “I can get on with my job because it’s one less product I need to shop around for. I know I can rely on Redi-Liner.”



PRODUCT: Redi-Liner wear panels

“Before we installed the 12"x12" [Redi-Liner] squares we were using 1/2" steel AR plate. The steel plate would last a season, about 200,000 ton across the screen deck. Since we installed your product, we’ve run over 385,000 ton through the decks and they show very little wear! Not only are we getting more lift and wear than the steel AR plate, the installation of this product is a piece of cake!

“Thanks for a great product!”

- Steve E., Kokosing Material, Inc.



BENEFITS OF KRYPTANE® POLYURETHANE:

- Superior wear resistance
- Incredibly high split-tear resistance
- Not susceptible to thermal expansion
- Easy to handle and flexible
- Can be formulated to work in both wet and dry conditions



WHY ARGONICS?

We are one of the country's largest producers of hot cast polyurethane products. Many of these products are used in the concrete, aggregate, and mining industries. We can help with almost any wear or abrasion problems at your plant or facility.

Whether you're looking for custom liners, conveyor belt cleaners, or something else, we will tackle your wear problems from concept and design to solution and delivery.



ARGONICS
ENGINEERED POLYURETHANE

520 9th Street • Gwinn, MI 49841

906.226.9747 f: 906.226.9779

www.argonics.com

