

Conveyor Belt Cleaning Systems



Argonics is one of the country's largest producers of wear-resistant polyurethane products, providing high-performance urethane solutions at its state-of-the-art production facility. Whether you're producing concrete, manufacturing aggregate products, processing grain or mining precious metal, Argonics has built its reputation on providing cost-effective solutions for some of the most demanding applications.



BENEFITS:

- Reduces clean-up costs and creates a cleaner, safer work environment
- A variety of blade formulations are available to best fit your application, including tungsten carbide
- Design allows greater full-blade contact while easily deflecting belt splices
- Removes excessive carryback while reducing belt wear
- No rusty springs, hoses, cables or shocks to deal with
- Quick blade change out with less downtime

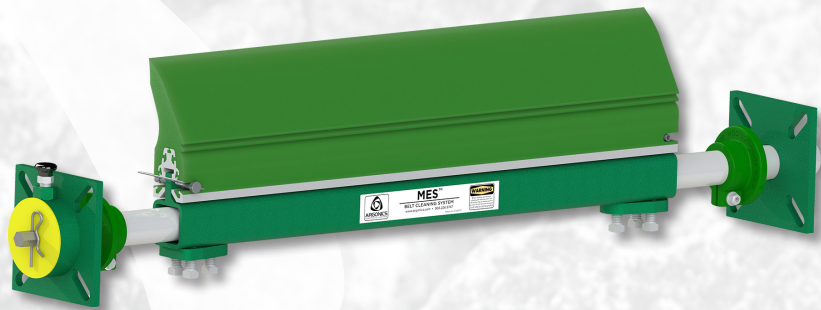
INDUSTRIES SERVED:

- Aggregate
- Cement
- Concrete
- Coal mining
- Coal fired power plants
- Precious metal mining
- Pulp and paper



Primary CONVEYOR BELT CLEANING SYSTEMS

MES™



The MES cleaner is a low-maintenance, high-performance cleaner with a low-profile, compact design. It uses our 6" tall polyurethane blade, and the universal mounting plates are designed to allow the cleaner to replace other OEM conveyor cleaners. The MES uses a unique internal tensioning system that allows for quick and easy tensioning.

Micro Eraser™



The Micro Eraser is your answer for portable equipment with tight clearance issues. Designed with our 6" tall polyurethane blade, it works best on belts up to 48" wide with head pulleys of 28" diameter or less. This economical but powerful system uses our patented Perma-Torque™ tensioner.

Eraser PQ™



The Eraser PQ (Pit and Quarry) system is an economical cleaner designed for performance and reliability. With a simple and effective spring tensioning unit, it uses our 6" tall polyurethane blade and requires little to no maintenance.

Eraser RPQ™



The Eraser RPQ system uses the same simple and effective spring tensioning unit as the Eraser PQ, with a 7" tall polyurethane blade, giving you more wear life and allowing for installation on systems with a larger diameter head pulley.

Primary CONVEYOR BELT CLEANING SYSTEMS

Eraser™



The Eraser system is our standard industrial workhorse. This rugged yet versatile cleaner is built around our exclusive patented Safe Torque™ tensioning system. It is equipped with a 7.25" tall polyurethane blade, and can handle most of your demanding applications with ease.

S3Max™



The S3Max is an intermediate system between the Eraser and the Super Eraser that features a 10" tall polyurethane blade. It is ideally suited for more aggressive applications where a larger blade is required, or those systems with a larger head pulley.

Super Eraser™



The Super Eraser is a Mine Duty cleaner. It has a .25" thick, 3.5" x 3.5" box steel main-frame and a massive 12" polyurethane blade. It will handle anything you throw at it. If you're dealing with high speed, high tonnage belts, the Super Eraser was built specifically for you.

Eraser MDP™



The Eraser MDP is the Super Eraser system with a one-piece 12" polyurethane blade with a patent-pending insert engineered for strength. Meant for use in the toughest, mine duty applications, the MDP is extremely rugged, durable and long-lasting.

Primary CONVEYOR BELT CLEANING SYSTEMS

Eraser HD™



The Eraser HD is designed to withstand heavy vibration. This system has a reinforced mainframe and a heavy-duty channel attachment design. It utilizes a series of 6" wide x 7" tall polyurethane blade segments that conform to crowned head pulleys.

Super Eraser HD™



The Super Eraser HD is a channel mount version of the Super Eraser. It matches Mine Duty design with segmented blade technology. If you like big equipment, this is the one. Even the harshest environments don't stand a chance against the Super Eraser HD. Available in pin style or with Safe Torque.

Eraser SHD™



The Eraser SHD utilizes the Super Eraser mainframe and Safe Torque tensioners paired with an 11.25" tall replaceable tip blade. A mine duty design, this heavy-duty system allows for only the 6" blade tip sections to be replaced when they become worn, rather than the entire blade length.

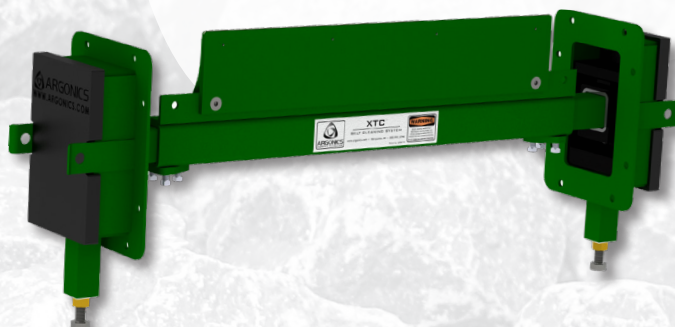
Secondary CONVEYOR BELT CLEANING SYSTEMS

XTC™

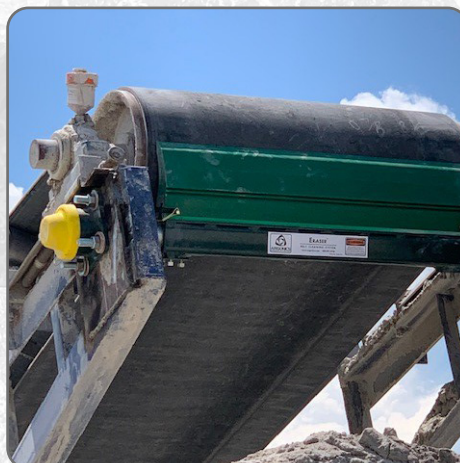


The XTC is one powerful reversing conveyor cleaner. The system can handle wet, dry, sticky or slimy conditions. The unique Web-Torque tensioner has enough give for mechanical splices and the flow-over blade design reduces material build up.

XTC™ Tungsten



The XTC with tungsten is ideal for applications with belt speeds up to 1000 fpm. The tungsten system uses the same mainframe and unique Web-Torque tensioner as the urethane system, which has proven effective in wet, dry, sticky or slimy conditions. Tool steel- and stainless steel-tipped blades are also available.



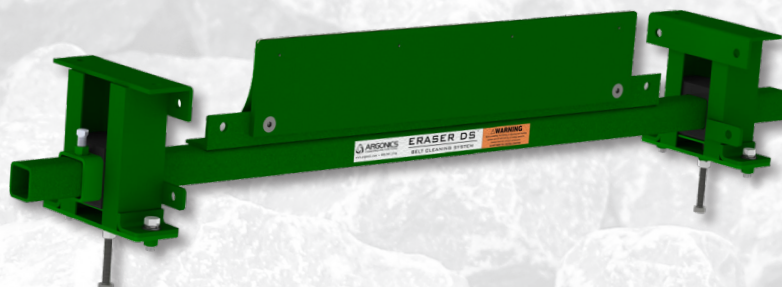
Secondary CONVEYOR BELT CLEANING SYSTEMS

Eraser DS™



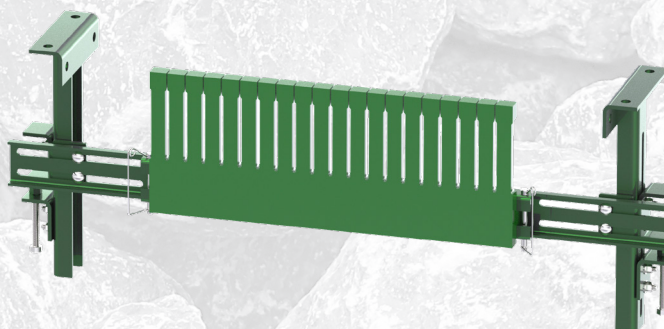
The Eraser DS is an economical version of our XTC cleaner, with a .19" thick, 2"x 2" powder-coated tube stock steel mainframe for strength and durability. The DS uses the same polyurethane blade as the XTC.

Eraser DS™ Tungsten



The Eraser DS tungsten system is urethane-free for use with high-temperature materials. It uses the same .19" thick, 2"x 2" powder-coated tube stock steel mainframe as the DS system. It also utilizes the same tungsten carbide blades as the XTC.

Chevron Belt Cleaner



The Chevron Belt Cleaner is designed to effectively remove carryback from challenging chevron, cleated, or raised rib conveyor belts. Its flexible polyurethane fingers ensure efficient cleaning without causing any damage to the belt. The powder-coated mounting brackets offer two attachment options to suit your specific operational needs.

Secondary CONVEYOR BELT CLEANING SYSTEMS

Super-G™



The Super-G's unique "pass-through" mainframe design allows material to freely fall through it, keeping your systems online with little to no maintenance. This system is based on the same heavy-duty mainframe and Perma-Torque tensioner as our Eraser system.

Super-G™ Tungsten



The Super-G with tungsten features a completely unique, redesigned blade. It uses the same mainframe and Perma-Torque tensioner as the urethane Super-G. The urethane cartridge holds the 6" tungsten blade tips, which allows the blades to flex with and maintain contact and pressure against the belt.

Super-G™ XL



The tungsten Super-G XL is a longer version of the tungsten Super-G, available in lengths of 72", 84", and 96". The Super-G XL is built on a .25" thick, 3.5" box steel mainframe, similar to the Super Eraser. Pins in the center allow it to hold two of our tungsten-tipped urethane blades, which flex to maintain pressure against the belt.

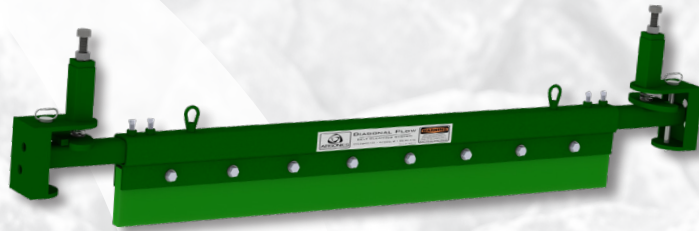
Brush Cleaner



The Brush Cleaner is a completely contained system, which utilizes a Van der Graaf drum motor. This motor is an enclosed unit with all motorized parts inside the roller, making it the choice for the most challenging environments. The compact, low-profile design operates at 96% efficiency and is virtually maintenance-free. It is ideal for use on chevron or cleated belts.

Plow CONVEYOR BELT CLEANING SYSTEMS

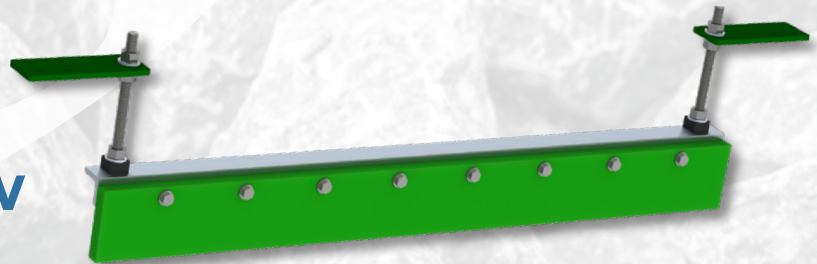
Diagonal Plow



The V-Max X-Plow may seem simple, but don't be fooled, it works!

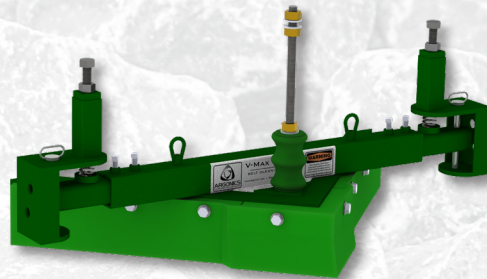
Thanks to the adjustable down pressure system, this single-minded plow will reduce your down time and increase your bottom line.

Aluminum Diagonal Plow



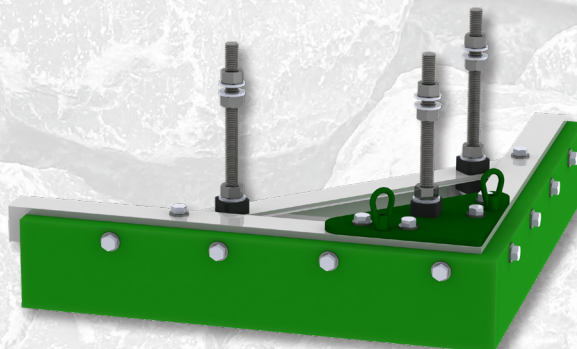
The Aluminum X-Plow offers complete cleaning at an economical price. Utilizing the same blade as the V-Max X-Plow with a lightweight aluminum mainframe, this system is best suited to quarry or other like environments.

V-Max V-Plow™



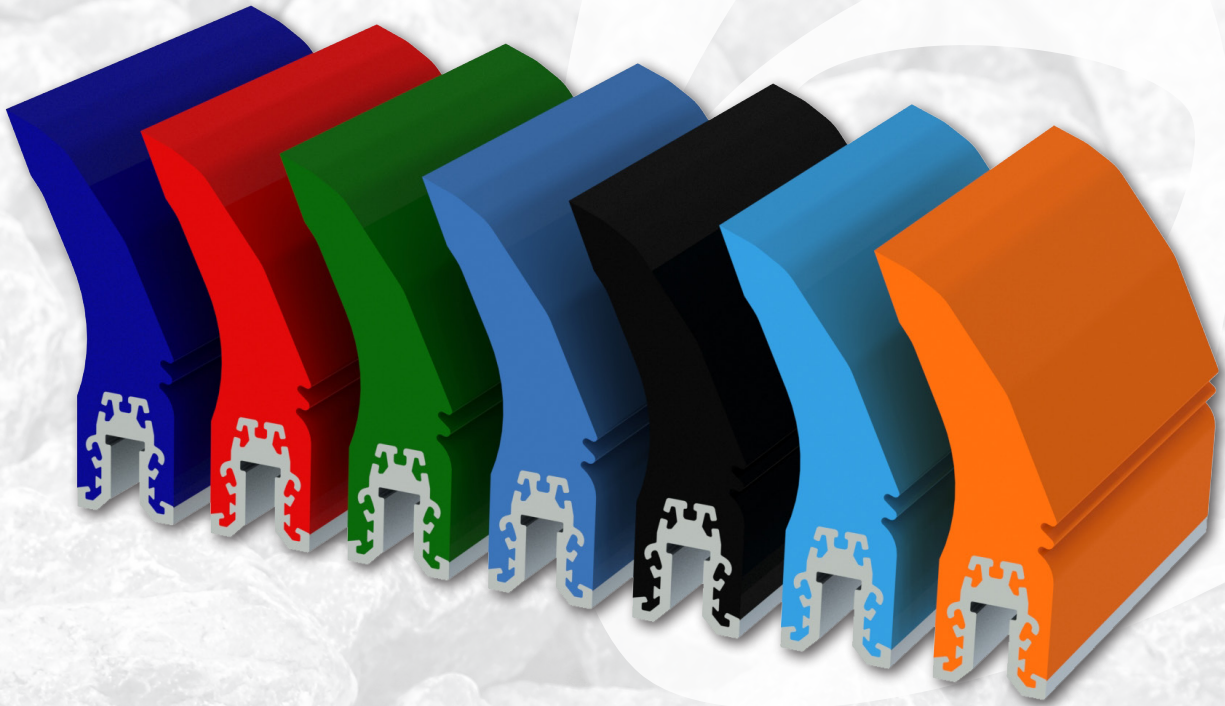
The V-Max V-Plow has seen duty in some of the world's largest quarries and has protected them from major damage and costly repairs. Dirt and rocks can get caught in between the belt and pulleys, ripping holes and creating hours of costly downtime. The V-Max delivers adjustable down force, so nothing will get through.

Aluminum V-Plow™



The Aluminum V-Plow is an economical solution for budget-conscious quarries that want the protection that a v-plow offers. The Aluminum V-Plow glides on the belt's surface, effectively removing the dirt and rocks while keeping an eye on your budget.

Replacement Blades FOR MOST OEM SYSTEMS



The Argonics primary and secondary replacement blades are specifically engineered to eliminate carryback by removing debris from the belt's surface. They are field-tested and proven to withstand the most severe conveying environments around the world, outlasting any other polyurethane blade by a 2-to-1 margin.

Our blades use our proven Kryptane® polyurethane formula. They directly retrofit OEM systems with no adaptation necessary.

RETROFIT BLADES AVAILABLE:

ARCH Environmental Equipment, Inc.

Gordon Saber® Mini Blade (Raptor MGS™)
Gordon Saber® Primary Blade (Raptor GS™)
Gordon "SCM" Channel Mount Blade (Raptor GSC™)
Gordon "SCM" Channel Mount Blade (Raptor GSC2™)

ASGCO® Manufacturing, Inc.

Mini-Skalper (Raptor AGM™)
Skalper I® Blade (Raptor AGC™)
Skalper II®
Skalper IV® Blade (Raptor AG2™)

Benetech®

AdvantEdge™ Primary Cleaner (Raptor BT™)

Flexco

Rockline™ Primary Belt Cleaner (Raptor RL™)
Mineline™ Primary Belt Cleaner (Raptor ML™)
MegaShear™ Primary Blade (Raptor FMS™)

Richwood Industries Inc.

Combi-T® 1C and 1C-ITC Blade (Edge™)

Superior Industries

Exterra® Primary Blade (Raptor MPV™)

Martin® Engineering

QC1™ Low Profile Single Notch Blade (Raptor MLP™)
QC1™ Low Profile Double Notch Blade (Raptor MDL™)
QC1™ Standard Profile Single Notch Blade (Raptor MSP™)
QC1™ Standard Profile Double Notch Blade (Raptor MDS™)
QC1™ Heavy Duty Profile Blade (Raptor MHP™)
QC1+™ HD Profile Blade - Clamp Style (Raptor MQA™)
QC1+™ PV Profile Blade - Clamp Style (Raptor MQB™)
QC1+™ XHD Profile Blade - Clamp Style (Raptor MQC™)
QC1™ Extra Heavy Duty Profile Blade (Raptor MXA™)
QC1™ Extra Heavy Duty Profile Blade (Raptor MXB™)
Pit Viper™ Blade (Raptor MPV™)
Durt Tracker® Blade (Raptor MHD™)
Durt Tracker® Blade (Raptor DT2™)
XHD Durt Tracker® (Raptor DXT™)
Durt Hawg® Primary Blade (Raptor MDH™)
Durt Hawg® Primary Blade (Raptor DH2™)
Durt Hawg® Secondary Blade (AccuFlo PigHead™)

Saber® is a registered trademark of ARCH Environmental Equipment Inc., Paducah, KY. · ASGCO® and Skalper® are registered trademarks of ASGCO Manufacturing, Inc., Allentown, PA. · Benetech® is a registered trademark of Benetech, Inc., Aurora, IL. AdvantEdge™ is a trademark of Benetech, Inc., Aurora, IL. · Rockline™, Mineline, and MegaShear™ are trademarks of Flexco, Downers Grove, IL. · Metso® is a registered trademark of Metso Corporation, Helsinki, Finland · Combi-T® is a registered trademark of Richwood Industries, Inc., Huntington, WV. · Exterra® is a registered trademark of Superior Industries, Inc., Morris, MN. · Martin®, Durt Tracker®, and Durt Hawg® are registered trademarks of Martin Engineering, Neponset, IL. Pit Viper™, QC1™, and QC2™ are trademarks of Martin Engineering, Neponset, IL.

Blade Durometer SELECTION GUIDE

Formula/Durometer Color	Application	Material	Temperature
ETHER 62 (N62)	Normally used for extremely wet applications, sands & fines	Lots of liquid on belt, sand or slurry	-40°F to 180°F
ETHER 80 (R80)	Good for wet applications with any pH level	Fine particles including sand, grain, ³ / ₈ " minus washed materials	-40°F to 225°F
ESTER 83 (G83)	Our standard, high abrasion-resistant all-purpose cleaning blade	Most sand and gravel materials, coal, ores	-40°F to 225°F
ETHER 90 (U90)	Good for dry applications with any pH level	1/2" washed / finished product. Wood chips, cement, limestone, grain, sugar, clay or other sticky material	-20°F to 225°F
ESTER 93 (B93)	Our high temperature cleaning blade	Extremely coarse aggregate, asphalt, recycled materials, glass, higher temp, sticky applications	-20°F to 250°F Up to 300°F intermittent
FRAS (RU83)	Flame-retardant, anti-static, cleaning blade. Argonics is one of the only blade manufacturers in the US to offer this formula	Coal mining and coal-fired power plants	-40°F to 225°F
FLAME RETARDANT (FOxx) - CAN BE ANY DUROMETER	MSHA approved, FrontLine® flame-resistant cleaning blade	Flame retardant urethane (can be any durometer or formula)	Temperature varies depending on the durometer
CERAMIC (CALL FOR AVAILABILITY)	Good for very cold, winter applications or frozen materials		Temp. varies depending on the durometer, typically G83

Safe Torque™ RATCHET SYSTEM



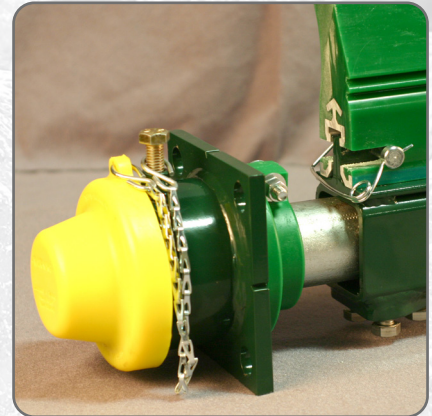
FEATURES:

- Safer operation
- Easier to tension
- Corrosion resistant
- One hand adjustment
- No kickback or pins
- Completely sealed

SAFE TORQUE RATCHET SYSTEM

The Safe Torque ratchet tensioner is available on most Argonics conveyor belt cleaning systems. Our Safe Torque tensioner is a unique solid urethane ratchet style adjustment device, specifically designed to work in conjunction with our patented Perma-Torque™ tensioning system. The Perma-Torque tensioner applies constant blade pressure across the full length of the head pulley.

The Safe Torque ratchet actuating system offers the unique ability to tension a conveyor belt cleaning system with only one hand, and is extremely useful in confined areas. The supplied dust cap seals the system from fine particle impaction, common to so many tensioners on the market today. You'll benefit from the ease of use and the inherent safety that our Safe Torque ratchet tensioner offers.



PRIMARY CLEANER SELECTION GUIDE

System Name	Max Belt Speed in FPM	Min Pulley Diameter	Max Pulley Diameter	Max Belt Width	Tensioner
Eraser™ SHD	1200	24"	60"	120"	Safe Torque™
Eraser™ MDP	1200	24"	60"	96"	Safe Torque™
Super Eraser™	1000	24"	60"	70"	Safe Torque™
S3 Max™	900	24"	48"	96"	Safe Torque™
Super Eraser HD™	1000	24"	60"	120"	Safe Torque™
Eraser HD™	750	16"	48"	96"	Safe Torque™
Eraser™	750	16"	32"	96"	Safe Torque™
Eraser™ RPQ	450	8"	24"	60"	Spring
Eraser™ PQ	450	8"	20"	60"	Spring
Micro Eraser™	500	8"	20"	72"	Pin Style
MES™	500	8"	20"	54"	Quick Torque™

SECONDARY CLEANER SELECTION GUIDE

System Name	Max Belt Speed in FPM	Max Belt Width	Blade
XTC™	750	72"	Polyurethane
XTC™	1000	96"	Tungsten
Eraser DS™	600	72"	Polyurethane
Eraser DS™	900	72"	Tungsten
Super-G™	750	72"	Polyurethane
Super-G™	900	60"	Tungsten
Super-G XL™	900	96"	Tungsten
Chevron Belt Cleaner	500	72"	Polyurethane
Brush Cleaner	Varies	72"	Nylon bristles (others available)

PLOW CLEANER SELECTION GUIDE

System Name	Max Belt Speed in FPM	Max Belt Width	Mainframe
V-Max™ V-Plow	1000	96"	Steel
Aluminum V-Plow	750	72"	Aluminum
V-Max™ X-Plow	1000	96"	Steel
Aluminum X-Plow	750	72"	Aluminum



ARGONICS
ENGINEERED POLYURETHANE

520 9th Street • Gwinn, MI 49841

906.226.9747 f: 906.226.9779

www.argonics.com



The Argonics Nested Triangle logo, Kryptane®, MES™, Micro Eraser™, Eraser PQ™, Eraser RPQ™, Eraser™, S3Max™, Super Eraser™, Eraser MDP™, Eraser HD™, Super Eraser HD™, Eraser SHD™, XTC™, Eraser DS™, Super-G™, V-Max V-Plow™, Perma Torque™ and Safe Torque™ are trademarks or registered trademarks of Argonics, Inc. ©2020-2025 Patents: 6,056,112 . 7,441,647 . 5,979,638 LIB-CP-ACC-07-01 3/25