

Installation Guide



XTC™

Conveyor Belt Cleaning System



⚠ WARNING

Always obey all applicable safety rules.

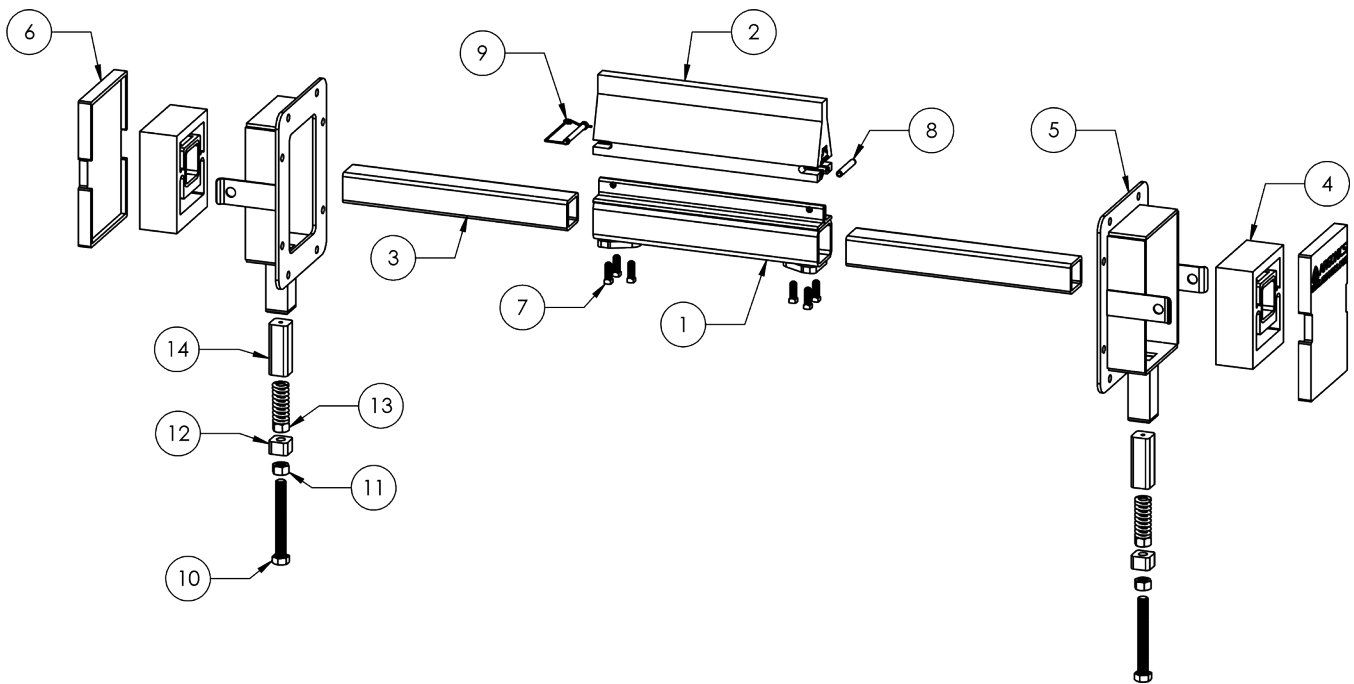
Be sure all power to the conveyor has been disconnected and controls are locked out.

Installation Tools Required

- Tape measure
- Cutting Torch or Hole Saw (3 1/2")
- Level
- Scribe or Chalk
- Welder or Drill
- 1/2" End Wrench
- 1/8" End Wrench or Crescent Wrench
- Straight Edge

Bolts, lock washers and nuts for mounting are not supplied

Assembly Breakdown



Number	Part Number	Quantity	Description
1	CP-AR-"XX"-A	1	Mainframe
2	CP-XT-"XX"-G83	1	Blade
3	CP-XT-18B or CP-XT-24B	2	Stub End
4	CP-XT-67C-B93	2	Extended Stub End
5	CP-XT-710A	2	Web Tensioner
6	CP-XT-812-B93	2	Door Frame
7	CP-AR-5125 S	6	Door Plate
8	CP-AR-305	1	Stainless Hex Head Set Screw 1/2" x 1-1/4"
9	CP-ESC-3835	1	Spring Pin
10	BOLT-0.75X6.0-NCFT	1	Tension Pin 1/4" x 4"
11	NUT-008	2	Tap Bolt
12	CP-XT-1515	2	0.75 - 10UNC Brass Nut
13	CP-DP-3125	2	Nylon Tensioner Nut
14	CP-XT-153-G83	2	Tension Spring
		2	Spring Sleeve

Step One: Layout

Place a straight edge or level perpendicular to the belt by using a square across the width of the belt (Figure 1). Where the belt leaves the head pulley (L1), make a mark on each side of the mounting structure or wall (L2). Repeat this process within the 16" maximum mounting area (A) shown in Figure 2 below. This will be your L3 mark. Now measure perpendicular to the belt $14\frac{5}{8}"$ (B) down from your marks and scribe a line between these two points.

This line should be parallel with the belt and $14\frac{5}{8}" \pm \frac{1}{4}"$ down. The XTC system can be mounted anywhere along this line. Make sure that both sides of the mounting structure wall are marked exactly the same.

The ideal location is to have the edge of the door frame directly below and perpendicular to the pulley shafts center. If no structure is available at this location, one will need to be added.

Step Two: Mounting

The XTC system comes fully assembled. Remove the door frames from the mainframe by removing the door plates and loosening the square head set screws from the web-torque tensioners. The door frames are designed to be welded or bolted into position. Using a door frame as a template, line up the lower right hand corner of the door frame with the bisected lines on the mounting structure wall from Step 1 above.

Trace the inside perimeter and the entire outside perimeter of the door frame onto the mounting structure wall. Also, transfer the bolt hole pattern if you intend to bolt the system into place rather than weld. Repeat this process for the other side of the mounting structure. **NOTE:**

Both sides must be equal and perpendicular to the belt.

Cut the center approximately $\frac{1}{2}"$ larger than the trace which was scribed on each side of the mounting structure. **NOTE: For Bolt-in Only** - Using the traces that you scribed for the mounting holes, drill eight $\frac{5}{8}"$ diameter holes to accept $\frac{1}{2}"$ diameter grade 8 bolts. Place the door frame onto the side of the mounting structure wall. Use the scribed perimeter lines to line up the frame and then weld or bolt it into place. If welding, eight stitch welds is sufficient on the corners of the door frame. Place the web-torque tensioners back into the door frames so that the head of the "square head" set screw is pointing down. Using a $\frac{1}{2}"$ end wrench, loosen the three square head set screws at each end of the mainframe. Collapse the stub ends into the mainframe. Lift the mainframe into position. Now pull the stub ends out of the mainframe and slide them into the square holes within the web tensioners that are located in the door frames. Make sure that the ends of the stub ends do not protrude through the outside of the web-torque tensioners. Tighten the 1" set screws located on the web-torque tensioners. Center the blade with the belt and snug the six mainframe set screws to secure the stub ends. Check for minimal lateral movement of the assembly. Adjust if necessary, realign and tighten all mainframe set screws.

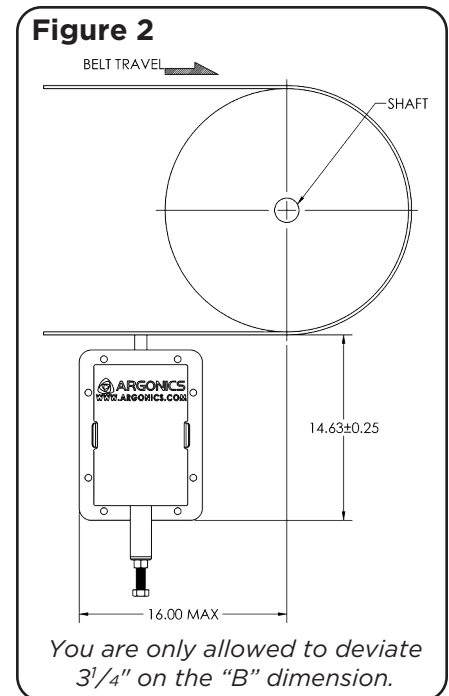
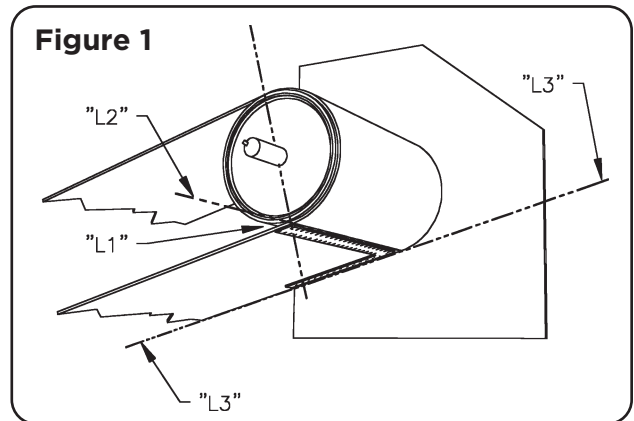
Step Three: Tensioning

Tighten the $\frac{3}{4}"$ tap bolts located at the bottom of the door frames to bring the blade into contact with the belt on both ends of the system. Once the blade is in contact with the belt, continue to tighten both tap bolts another 10 complete revolutions. Tighten the brass lock nuts to secure web-torque tensioners in this position.

Install door plates by snapping them onto the door frames.

Installation is now complete.

Maintenance or retensioning should not be required throughout the life of the blade.



Installation

THE MOST RELIABLE AND COST-EFFECTIVE SKIRTING AVAILABLE

MADE WITH KRYPTANE® POLYURETHANE

Argonics formulates unique proprietary Kryptane polyurethane materials tailored to meet the demands of your wear application, whether it be sliding or impact abrasion, sticking or corrosion.

BENEFITS OF ARGONICS POLYURETHANE SKIRTING:

- 6 - 10 times the wear life over rubber
- 60% lower coefficient of friction compared to rubber, which reduces drag on conveyor motor
- Will not groove your conveyor belt when installed correctly



FOLD-N-SEAL™

If you're looking for a quality multi-sealing conveyor skirting solution that isn't hard on your budget, look no further: Fold-n-Seal is your answer.

Fold-n-Seal gives you the best of both worlds: material and dust containment in one unique solution. The primary seal keeps the material where it should be – on the belt. The secondary seal keeps dust and particulate material under control.



SNAP-LOC™ DUST SEAL

Snap-Loc is the gold standard for dust containment skirting. This straight-forward, no-nonsense design for dust control snaps into standard unistrut railing that can be bolted or welded into place.

Snap-Loc Dust Seal is engineered to create a perfect seal that follows the contours and low spots of the belt between trough rollers. No additional adjustments are needed for the life of the seal, saving you in both cost and hours of maintenance.



LOAD ZONE CONTAINMENT SKIRTING

Designed to do one thing and do it well: contain material at the transfer points on your belt line. The extra-rugged reinforced design with 1/4" steel means that our Containment Skirting is extremely effective in reducing spillage, resulting in reduced clean-up labor.

Containment skirting is available with either a flat or 20° beveled edge, and in 60" and 96" lengths. Varying heights and thicknesses available.



ARGONICS
ENGINEERED POLYURETHANE

520 9th Street • Gwinn, MI 49841

906.226.9747 800.991.2746 f: 906.226.9779

www.argonics.com



The Argonics Nested Triangle logo, Kryptane®, and V-Max™ are trademarks or registered trademarks of Argonics, Inc. Patents: 6,056,112 . 7,441,647 . 5,979,638