
SPEEDY SLEEVE™ POLY CURB BOX SYSTEM



BENEFITS:

- ◆ Available in Arch or Minneapolis styles
- ◆ Manufactured with corrosion-resistant materials
- ◆ Requires minimal inventory space – no need to store multiple sizes. Universal system reduces stock requirements
- ◆ Designed for Northern climates, but can be used anywhere there is a buried water line below frost grade
- ◆ Height can be adjusted in seconds to grade level
- ◆ Can be installed in concrete sidewalks and driveways

SPEEDY SLEEVE 1.5" POLY CURB BOX SYSTEM

SPEEDY SLEEVE POLYURETHANE REPAIR SLEEVE

- ◆ Tap-on repair sleeve allows for quick repair and easy access
- ◆ Embedded magnet assures locating with ease when buried
- ◆ Snap plug cap system with notches for easy removal with a flat-head screwdriver
- ◆ Patent-pending polyurethane sleeve slides tightly onto pipe and seals out debris
- ◆ Easy tracer wire attachment

Speedy Sleeve
Polyurethane
Repair Sleeve



PVC EXTENSION PIPE

- ◆ Will not corrode like cast iron boxes
- ◆ Less expensive to buy, install and repair than cast iron
- ◆ Readily available at home improvement and hardware stores
- ◆ Won't interfere with the valve
- ◆ Repairs can be easily made by cutting the pipe, installing a coupling and attaching a new piece of PVC

Customer-supplied
Schedule 80 PVC pipe

POLYURETHANE CURB BOX

- ◆ Available in Arch or Minneapolis styles
- ◆ Corrosion resistant
- ◆ Rod support keeps rod centered
- ◆ Protects against impact damage to the valve
- ◆ Easy tracer wire attachment
- ◆ Uses 1½" Schedule 80 PVC, but can be retrofitted with an adapter to use smaller diameter PVC

Arch style
with universal base



Minneapolis style



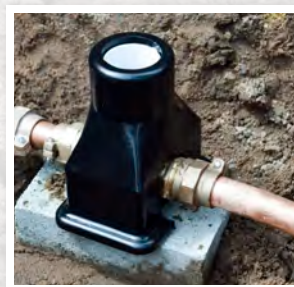
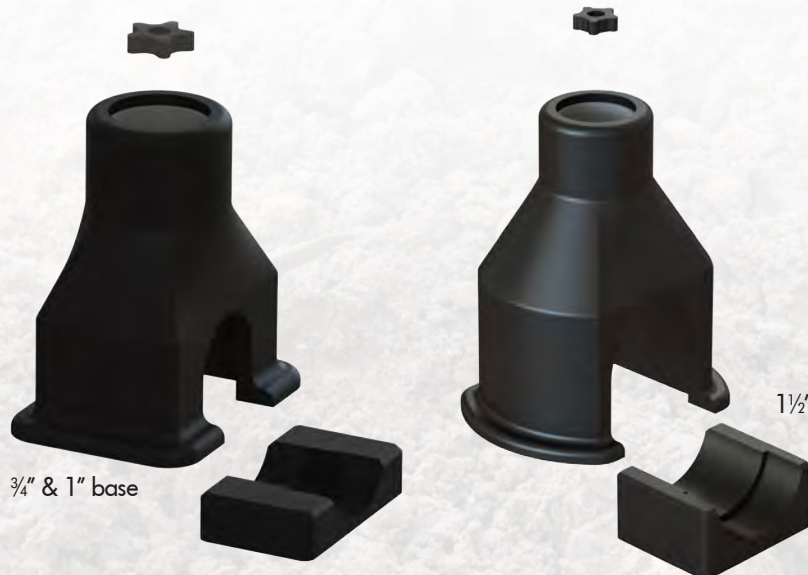
ARCH & MINNEAPOLIS STYLE 1.5" POLY CURB BOX OPTIONS

ARCH STYLE

Poly Curb Box

Our corrosion-resistant Arch style curb box covers the valve but does not connect mechanically. The flexible polyurethane will protect the valve and will absorb any pressure from above.

1½" & 2" base



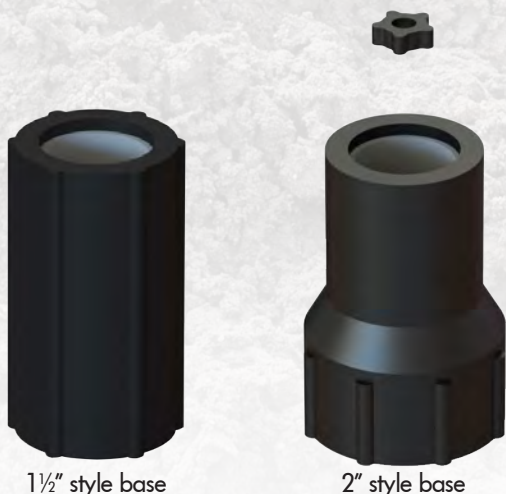
BENEFITS

- ◆ Universal base inhibits pipe from twisting and moving
- ◆ Designed to fit the most common types of valves (Mueller, A.Y. McDonald, Ford or Redhead)
- ◆ Keeps valve centered during installation
- ◆ Conforms better to the valve
- ◆ Available sizes: ¾", 1", 1½" and 2" valves

MINNEAPOLIS STYLE

Poly Curb Box

Our Minneapolis style curb box has a PVC threaded insert that protects the valve from corroding and ensures alignment of the valve and the box.



BENEFITS

- ◆ Corrosion-resistant threads
- ◆ Protects against impact damage to the valve
- ◆ No wrench needed to install – can be tightened by hand
- ◆ Available in 1½" and 2" thread

BUFFALO STYLE 2.5" POLY CURB BOX SYSTEM

The Argonics Buffalo Style Poly Curb Box System is the same innovative Speedy Sleeve in a larger diameter to allow for quick maintenance when vacuuming or suctioning out the box. The universal system is manufactured using corrosion-resistant polyurethane and durable PVC pipe that can be easily adjusted.

BUFFALO SPEEDY SLEEVE POLYURETHANE REPAIR SLEEVE

- ◆ Tap-on repair sleeve allows for quick repair and easy access
- ◆ Embedded magnet assures locating with ease when buried
- ◆ Snap plug cap system with notches for easy removal with a flat-head screwdriver
- ◆ Polyurethane sleeve slides tightly onto pipe and seals out debris
- ◆ Easy tracer wire attachment



BUFFALO STYLE POLYURETHANE CURB BOX

- ◆ 2.5" Arch style fits over 3/4" and 1" valve
- ◆ Corrosion resistant
- ◆ Rod centering design
- ◆ Protects against impact damage to the valve
- ◆ Easy tracer wire attachment
- ◆ Uses 2 1/2" Schedule 40 PVC



WWW.ARGONICS.COM

The Argonics Nested Triangle logo and Speedy Sleeve are trademarks of Argonics, Inc.

The Speedy Sleeve is Patent Pending.

520 9th Street • Gwinn, MI 49841

906.226.9747 • 800.991.2746

fax: 906.226.9779 • information@argonics.com



All Argonics products are
proudly made in the USA.