

HAUL TRUCK BED LINERS

APPLICATION DATA GUIDE

TABLE OF CONTENTS

Truck Info	2
Bed Types	
V Bottom Bed	3
Dual Slope Bed	4
Flat Bottom Bed	5
Measuring the Bed	6
Installing the Liner	8

All information and drawings contained within this guide are copyright of Argonics, Inc.

NOT FOR REDISTRIBUTION

All drawings contained in this guide are for identification purposes only. No drawings are shown to scale and their dimensions are for reference only.

© 2017 Argonics, Inc.



TRUCK INFO

Distributor Information

Distributor: _____

Address: _____

City: _____ State: _____ ZIP: _____

Contact: _____ Phone: _____

End User Information

Company: _____

Address: _____

City: _____ State: _____ ZIP: _____

Contact: _____ Phone: _____

Truck Information

Truck make: _____ Truck model: _____

Truck series: _____

Notes: _____

Truck Bed Types



V Bottom
(refer to page 3)



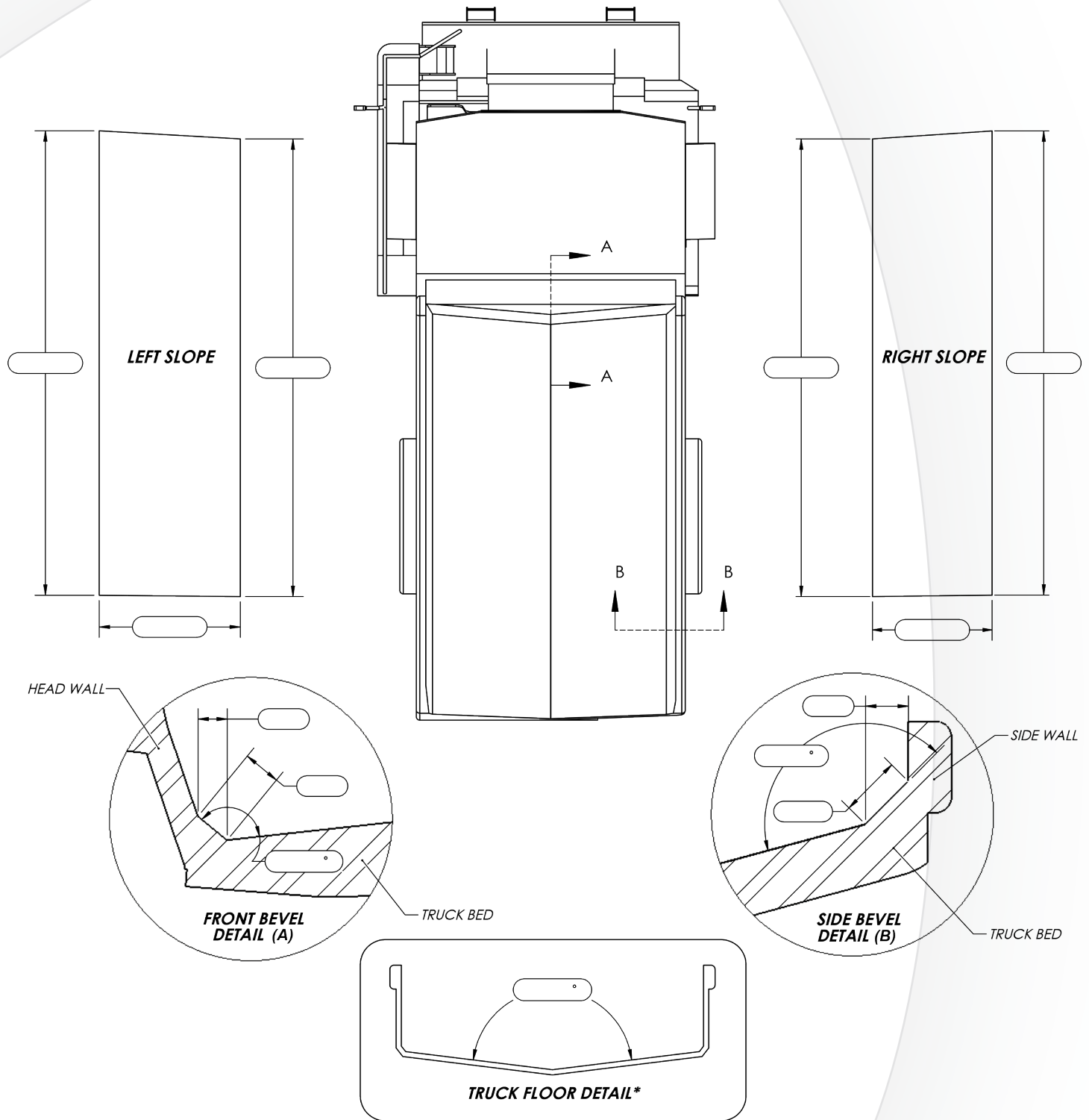
Dual Slope
(refer to page 4)



Flat Bottom
(refer to page 5)

V BOTTOM TRUCK BED

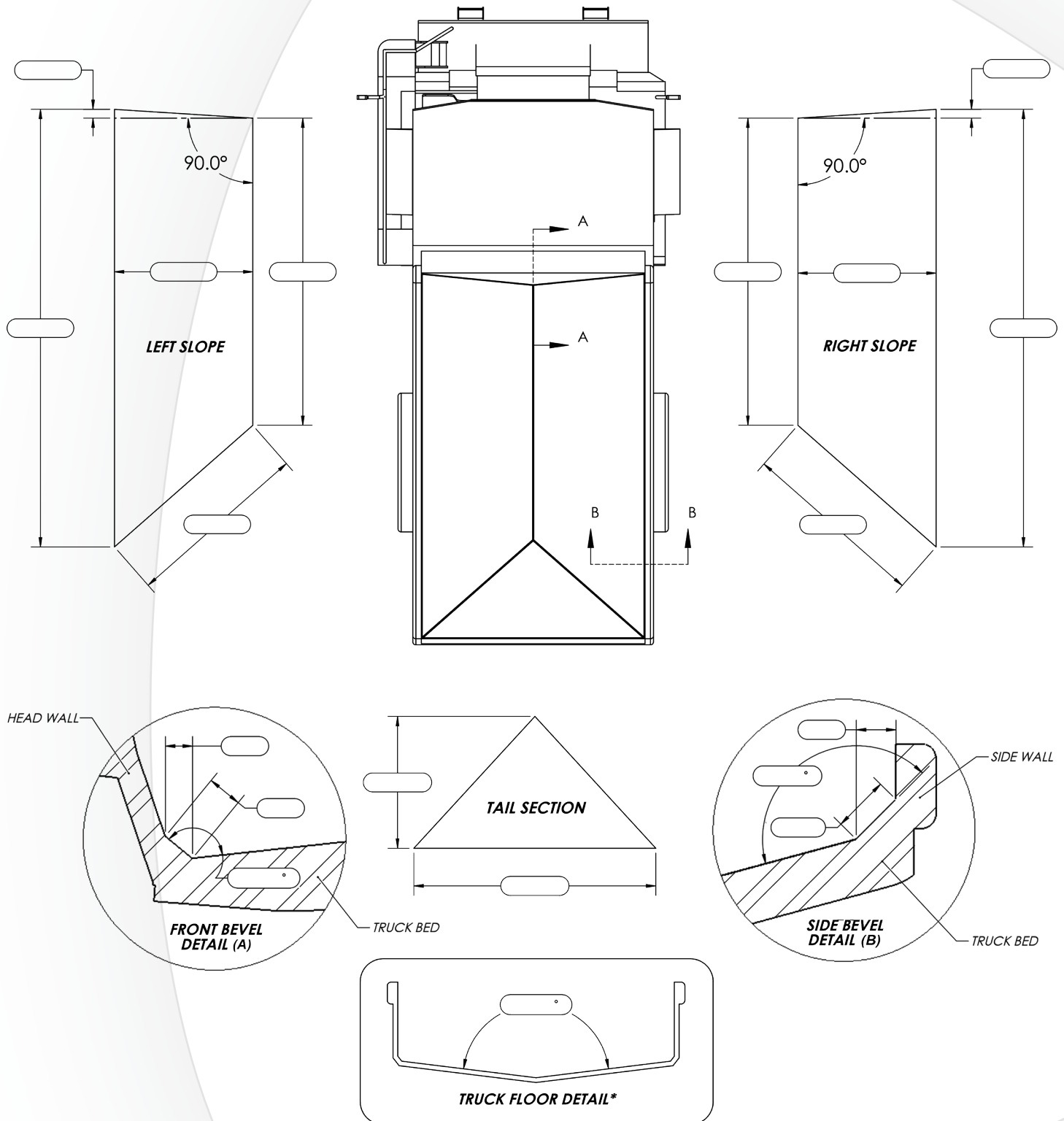
MEASUREMENT DATA



*If this does not apply to your truck, please put "N/A" for those dimensions.

DUAL SLOPE TRUCK BED

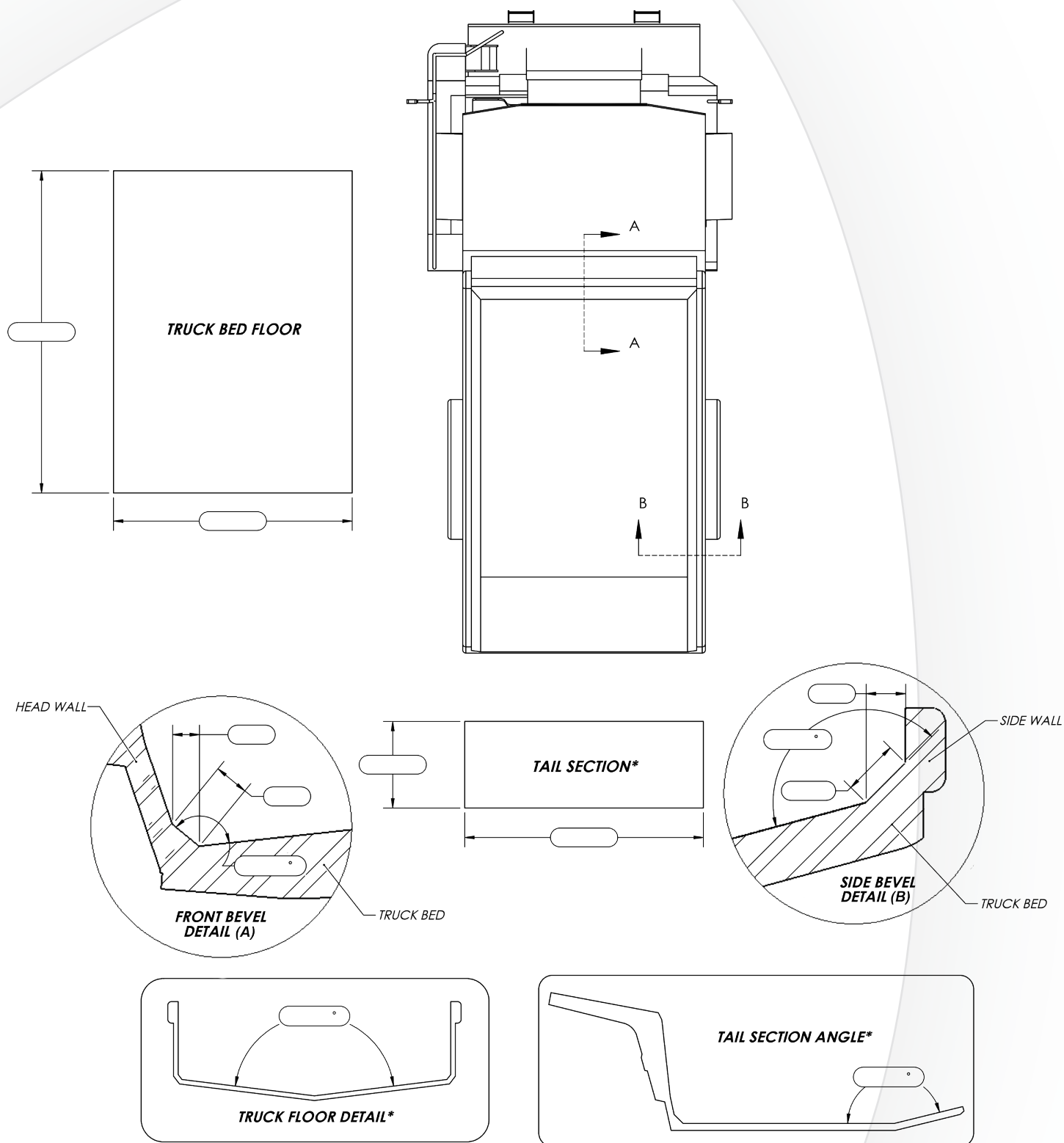
MEASUREMENT DATA



*If this does not apply to your truck, please put "N/A" for those dimensions.

FLAT BOTTOM TRUCK BED

MEASUREMENT DATA



*If this does not apply to your truck, please put "N/A" for those dimensions.

Argonics, Inc. • 520 9th St. Gwinn, MI 49841 • P: 800.991.2746 F: 906.226.9779
www.argonics.com

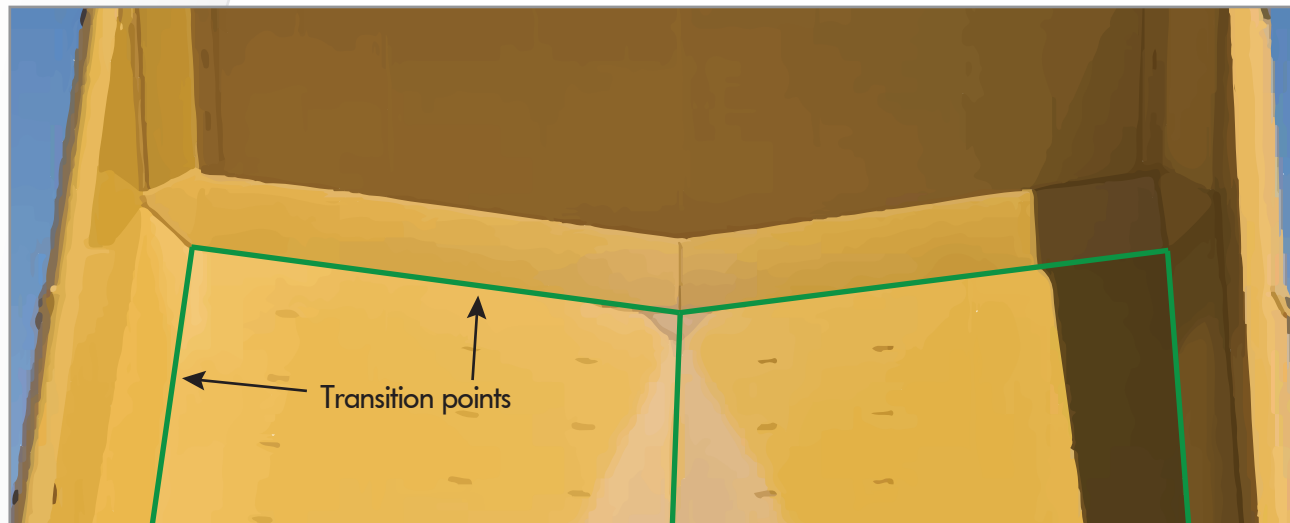
MEASUREMENT GUIDE

HOW TO TAKE PROPER MEASUREMENTS

All measurements should be taken in an empty bed with any liner, material or debris removed.

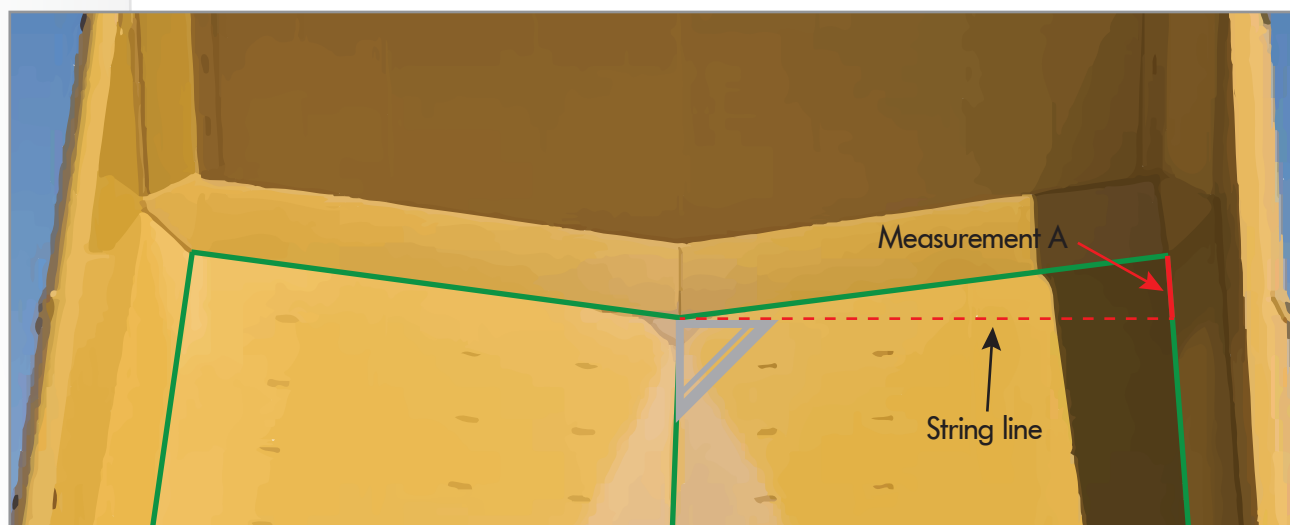
Measuring the Flats

All measurements should be taken with the tape measure flush to the floor. Start your measurements at a transition point where the floor meets the side angle.



Measuring the Slants

Using a string, start at the center of the floor where it meets the side of the bed and run it perpendicular, with a square as a guide.



You will need to measure the end of the line to the corner of the floor and the side angle, to get the "A" dimension.

MEASUREMENT GUIDE

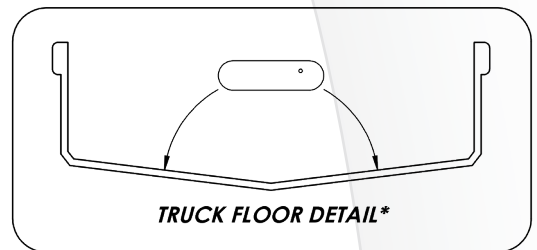
HOW TO TAKE PROPER MEASUREMENTS

Measuring for the Liner Bevels

You do not need to determine what the bevel will be or take the liner thickness into consideration. Simply measure the angle lengths on the floor.

Measuring the Angles

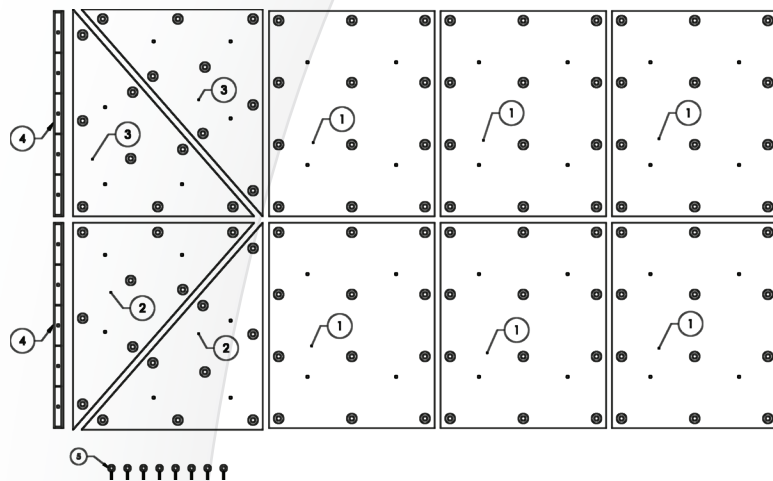
If you are measuring a V Bottom or Flat Bottom bed with an angle, you will need to provide the pitch. To do this, simply use an angle finder and enter the degree in the space provided on the data sheet.



INSTALLATION GUIDE

PROCEDURE FOR INSTALLATION

All liners are palletized for ease of installation, with the first liner needed on top of the stack and the last liner on the bottom.



Follow along with the individual liner guide that shows you where each piece will be installed. The first pieces to be installed will be nearest the cab.



The liners have threaded lugs to attach the supplied eye bolts, which allows for ease of lifting and positioning the liners.

INSTALLATION GUIDE

FASTENING THE TRUCK BED LINERS

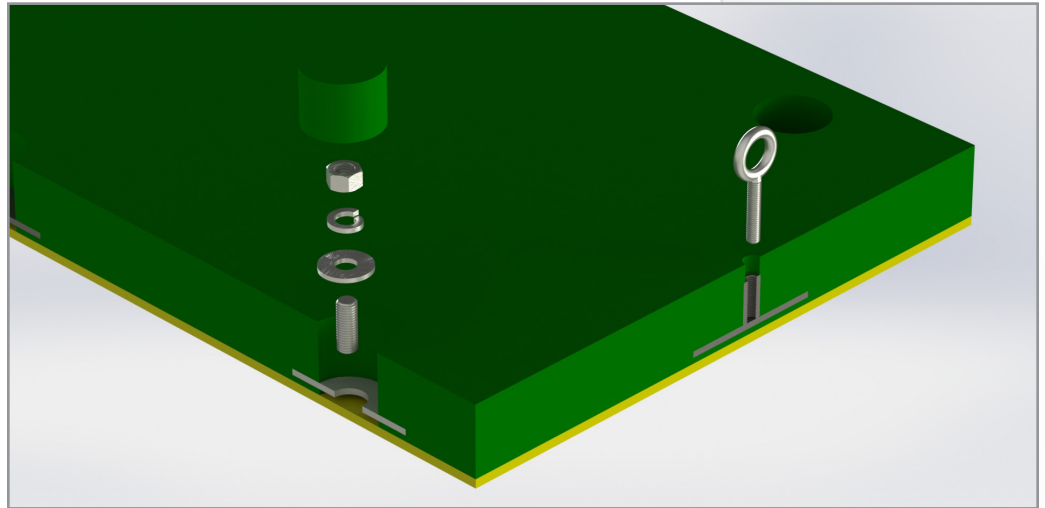
Once all the liners are in place, prep the floor of the bed. Remove any rust or debris through the mounting holes using a wire brush or needle gun.

Apply the threaded studs to the floor through each mounting hole.

Once the studs are welded, place a washer and nut over each and then securely tighten with a pneumatic drill.

Plugs

After the nuts are tightened, install the plugs. The plugs are designed to have a very tight fit. They are made this way to prevent the plug from popping out. One effective way of installing plugs is the sledge hammer method. Place the plug over the weld hole and hit it with the top flat portion of the hammer head.



Tail Bar

The tail bar is installed flush against the back edge of the liners at the tail of the truck body. Use the stud welder and hardware provided to secure it to the bed. When placing the tail bar for welding, leave a 1-2" gap between each bar. If you prefer, you can plug weld instead of stud weld.

Inspection

Once installation is complete, double-check that all holes are plugged and that the tail bar is tight against the liners. Installation is now complete!

