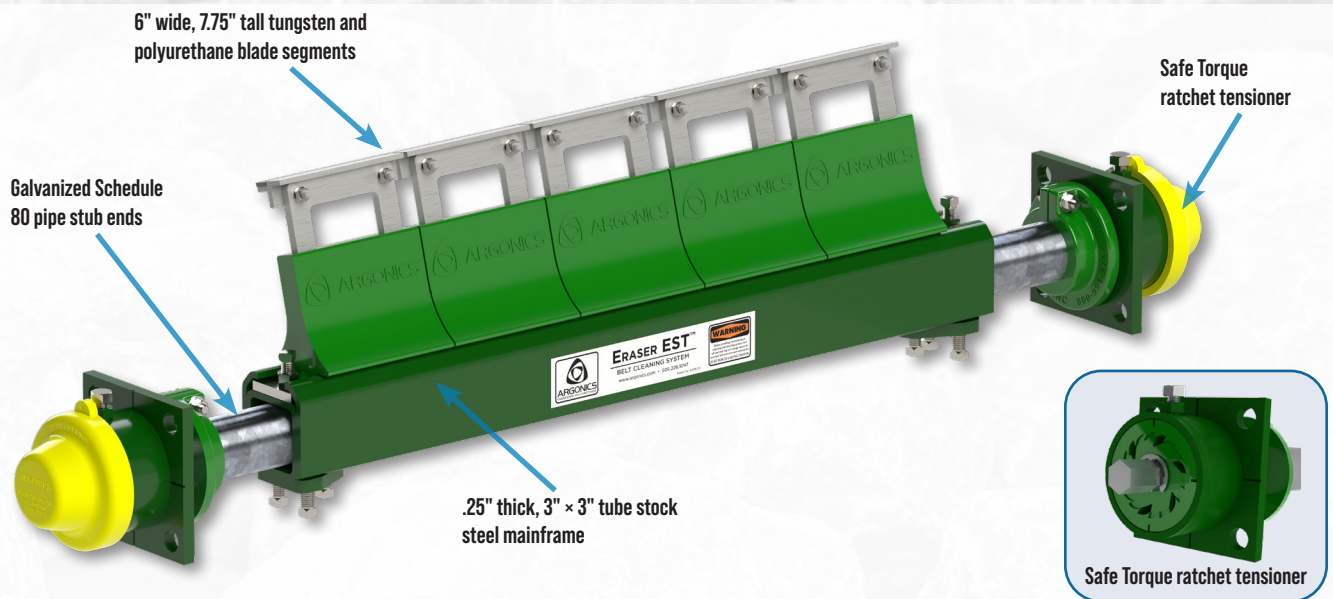


Eraser EST™

PRIMARY CONVEYOR BELT CLEANING SYSTEM



The Eraser EST is designed to withstand heavy vibration. This system has a reinforced mainframe and a heavy duty channel attachment design. It utilizes a series of 6" wide x 7.75" tall (152mm x 178 mm) tungsten-tipped blade segments that are ideal for wet, sticky material. Designed for superior strength and durability with a .25" (6 mm) thick, 3" x 3" (76 mm x 76 mm) tube stock steel mainframe and corrosion-resistant, galvanized Schedule 80 pipe stub ends.



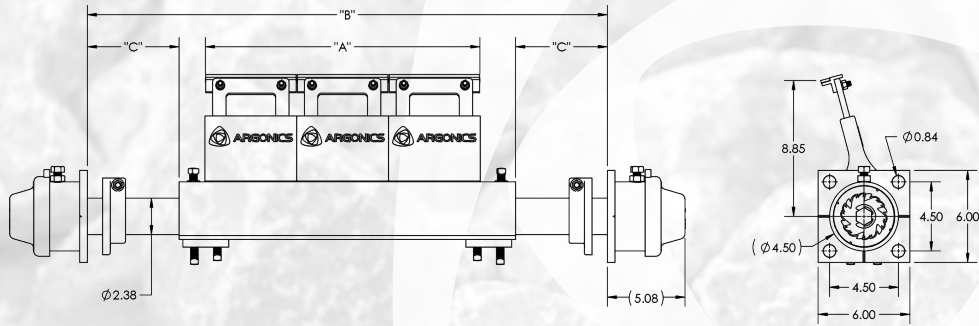
BENEFITS:

- Designed for use on conveyors with crowned head pulleys or heavy vibration
- Heavy duty 7.75" (178 mm) tall tungsten/polyurethane blades provide effective cleaning performance
- Intended for use only on vulcanized belts
- The Perma-Torque™ internal central tensioner is adjustable from 20 to 80 ft-lb (27 to 108 Nm) resulting in uniform cleaning pressure to the conveyor belt
- Compact mounting footprint only protrudes 5" (127 mm) from mounting structure
- No rusted springs, hoses, cables, shocks or mud-packed components to deal with
- Brightly colored safety yellow end caps seal the Safe Torque™ ratchet from dust and water contamination



SIZING INFORMATION

Dimensions - in. (mm)



Part Number	A		Min B		Max B		Min C		Max C	
	inches	(mm)	inches	(mm)	inches	(mm)	inches	(mm)	inches	(mm)
CP-EST-A18-24M-G90T	18.00	(457)	22.50	(572)	38.00	(965)	0.25	(6)	8.00	(203)
CP-EST-A24-30M-G90T	24.00	(610)	28.50	(724)	44.00	(1118)	0.25	(6)	8.00	(203)
CP-EST-A30-36M-G90T	30.00	(762)	34.50	(876)	50.00	(1270)	0.25	(6)	8.00	(203)
CP-EST-A36-42M-G90T	36.00	(914)	40.50	(1029)	56.00	(1422)	0.25	(6)	8.00	(203)
CP-EST-A42-48D-G90T	42.00	(1067)	46.50	(1181)	62.00	(1575)	0.25	(6)	8.00	(203)
CP-EST-A48-54D-G90T	48.00	(1219)	52.50	(1334)	68.00	(1727)	0.25	(6)	8.00	(203)
CP-EST-A54-60D-G90T	54.00	(1372)	58.50	(1486)	74.00	(1880)	0.25	(6)	8.00	(203)
CP-EST-A60-66D-G90T	60.00	(1524)	64.50	(1638)	80.00	(2032)	0.25	(6)	8.00	(203)
CP-EST-A66-72D-G90T	66.00	(1676)	70.50	(1791)	96.00	(2438)	0.25	(6)	8.00	(203)

Notes:

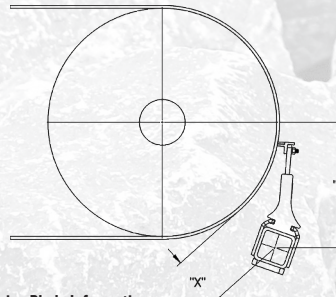
- To get minimum B or C, the shaft collars must be removed.
- For extended tensioner, add 14" (356 mm) to max B and 7" (178 mm) to max C.
- Mainframes come standard 4" (102 mm) longer than blade length.

SPECIFICATIONS

Recommended Belt Speeds
0 -1000 fpm (5 m/s)

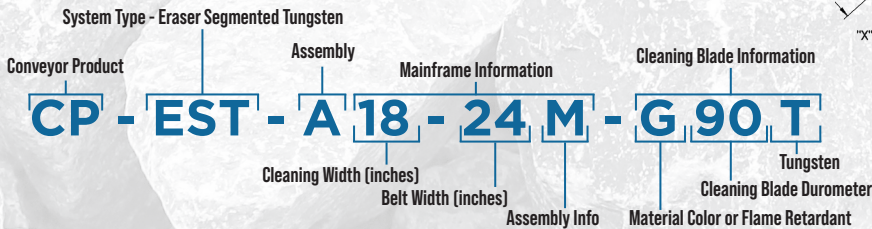
Pulley Diameter (PD)
Minimum: 16" (406 mm)
Maximum: 48" (1219 mm)

MOUNTING INFORMATION



Pulley Diameter	X	Z
16" - 18" (610 mm - 686 mm)	5" (127 mm)	11" (279 mm)
20" - 24" (508 mm - 610 mm)	4.5" (114 mm)	11" (279 mm)
26" - 30" (660 mm - 762 mm)	4" (101.6 mm)	11" (279 mm)
32" - 38" (813 mm - 965 mm)	3.5" (89 mm)	11" (279 mm)
40" - 44" (1016 mm - 1118 mm)	3" (76 mm)	11" (279 mm)
46" - 48" (1168 mm - 1219 mm)	2.75" (70 mm)	11" (279 mm)

NOMENCLATURE



520 9th Street • Gwinn, MI 49841
906.226.9747 f: 906.226.9779
www.argonics.com

