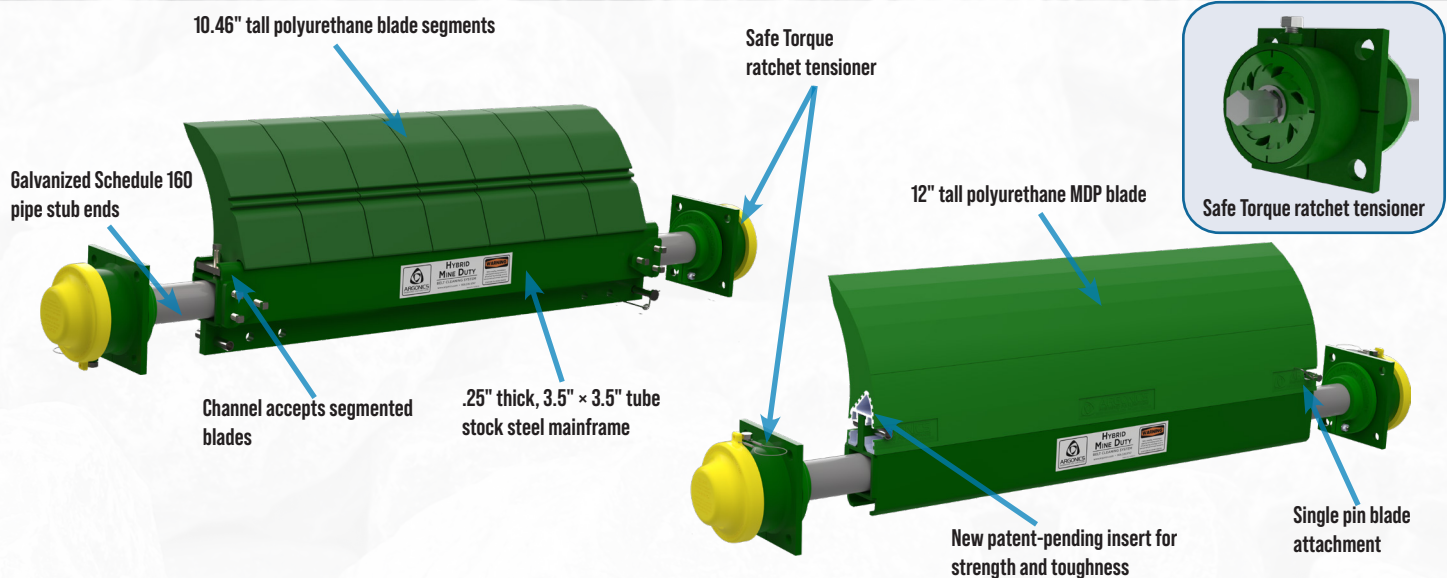


Hybrid Mine Duty

PRIMARY CONVEYOR BELT CLEANING SYSTEM



The Hybrid Mine Duty cleaner is a dual-sided cleaner that accepts both our full-length MDP and 6" segmented blades. The patent-pending MDP blade insert is engineered for strength and toughness. This system uses our Super Eraser's .25" (6 mm) thick, 3.5" x 3.5" (89 mm x 89 mm) tube stock steel mainframe and corrosion-resistant, galvanized Schedule 160 pipe stub ends for long lasting durability.



BENEFITS:

- Dual-sided mainframe accepts both full-length MDP and segmented DXT blades
- Switch from one blade style to the other if needs or applications change
- For use on conveyors with large head pulleys, big loads, harsh conditions and/or fast belt speeds
- The Perma-Torque™ internal central tensioner is adjustable from 30 to 100 ft-lb (40 to 136 Nm) resulting in uniform cleaning pressure to the conveyor belt
- Compact mounting footprint only protrudes 5.5" (140 mm) from mounting structure
- Safety yellow colored end caps seal the Safe Torque™ ratchet from dust and water contamination

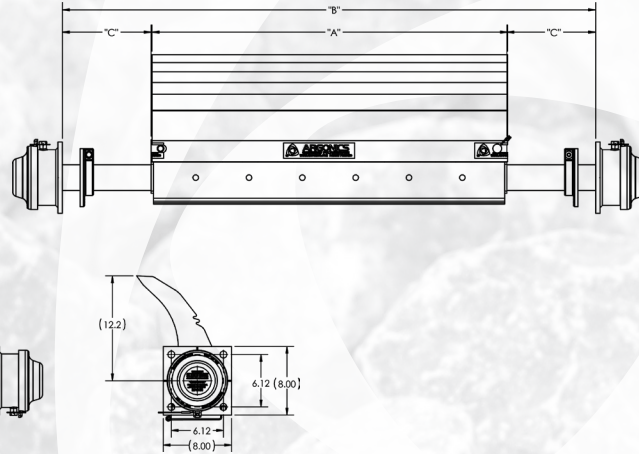
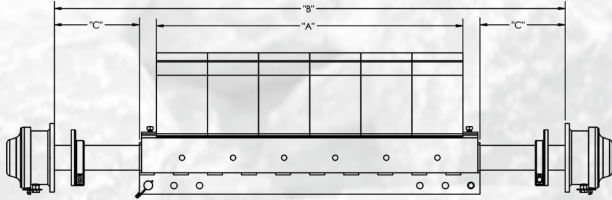
BLADES:

-  **N62 Ether**
Normally used for extremely wet applications, sands & fines
-  **B93 Ester**
Our high temperature cleaning blade, up to 250°F (121°C)
-  **R80 Ether**
Good for wet applications with any pH level
-  **FO83 Ester**
MSHA approved Front Line® flame-retardant cleaning blade
-  **G83 Ester**
Our high abrasion-resistant all-purpose cleaning blade
-  **RU83 Ester**
Flame retardant, anti-static cleaning blade
-  **U90 Ether**
Good for dry applications with any pH level
-  **G91 Ester**
Standard blade for the MDP, good for mining environments

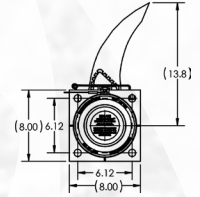
SIZING INFORMATION

Dimensions - in. (mm)

Segmented Blade



Solid Blade



Part Number	A - solid		A - segmented		Min B*		Max B		Min C*		Max C	
	inches	(mm)	inches	(mm)	inches	(mm)	inches	(mm)	inches	(mm)	inches	(mm)
CP-HMD-A03401	34.00	(864)	30.00	(762)	48.50	(1232)	62.00	(1575)	7.25	(184)	14.00	(356)
CP-HMD-A04001	40.00	(1016)	36.00	(914)	48.50	(1232)	68.00	(1727)	4.25	(108)	14.00	(356)
CP-HMD-A04601	46.00	(1168)	42.00	(1067)	48.50	(1232)	74.00	(1880)	1.25	(32)	14.00	(356)
CP-HMD-A05201	52.00	(1321)	48.00	(1219)	52.50	(1334)	80.00	(2032)	0.25	(6)	14.00	(356)
CP-HMD-A05801	58.00	(1473)	54.00	(1372)	58.50	(1486)	86.00	(2184)	0.25	(6)	14.00	(356)
CP-HMD-A07001	70.00	(1778)	66.00	(1676)	70.50	(1791)	98.00	(2489)	0.25	(6)	14.00	(356)

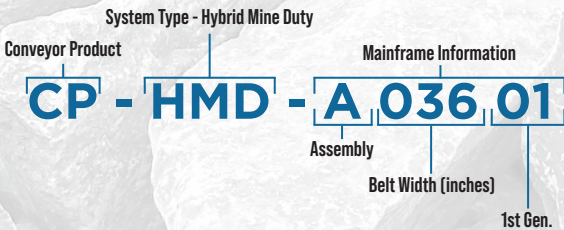
*Note: To get minimum B or C, the locking collars must be removed.

SPECIFICATIONS

Recommended Belt Speeds
0 - 1200 fpm (6.1 m/s)

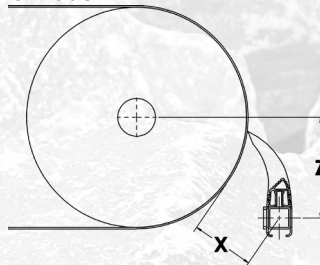
Pulley Diameter (PD)
Minimum: 24" (610 mm)
Maximum: 60" (1524 mm)

NOMENCLATURE

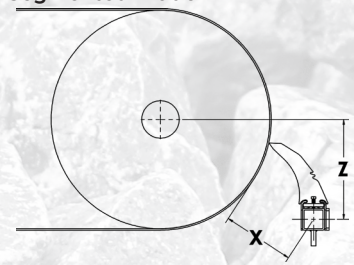


MOUNTING INFORMATION

Solid Blade



Segmented Blade



Pulley Diameter	X	Z	Pulley Diameter	X	Z
24" - 31" (610 mm - 788 mm)	7" (178 mm)	15.5" (394 mm)	24" - 28" (610 mm - 711 mm)	7.5" (190 mm)	12.62" (321 mm)
32" - 47" (813 mm - 1194 mm)	6.5" (165 mm)	15.5" (394 mm)	29" - 31" (737 mm - 787 mm)	7" (178 mm)	12.62" (321 mm)
48" - 60" (1220 mm - 1524 mm)	6.25" (159 mm)	15.5" (394 mm)	32" - 35" (813 mm - 889 mm)	6.5" (165 mm)	12.62" (321 mm)
			36" - 40" (914 mm - 1016 mm)	6" (152 mm)	12.62" (321 mm)
			41" - 45" (1041 mm - 1143 mm)	5.75" (146 mm)	12.62" (321 mm)
			46" - 49" (1168 mm - 1245 mm)	5.5" (140 mm)	12.62" (321 mm)
			50" - 60" (1270 mm - 1524 mm)	5" (127 mm)	12.62" (321 mm)



520 9th Street • Gwinn, MI 49841 • 906.226.9747 f: 906.226.9779

www.argonics.com

The Argonics Nested Triangle logo, Eraser MDP™, Perma-Torque™, and Safe Torque™ are trademarks of Argonics, Inc.

Patents: 6,056,112; 7,441,647; 5,979,638 LIB-CP-HMD-04-02 6/26